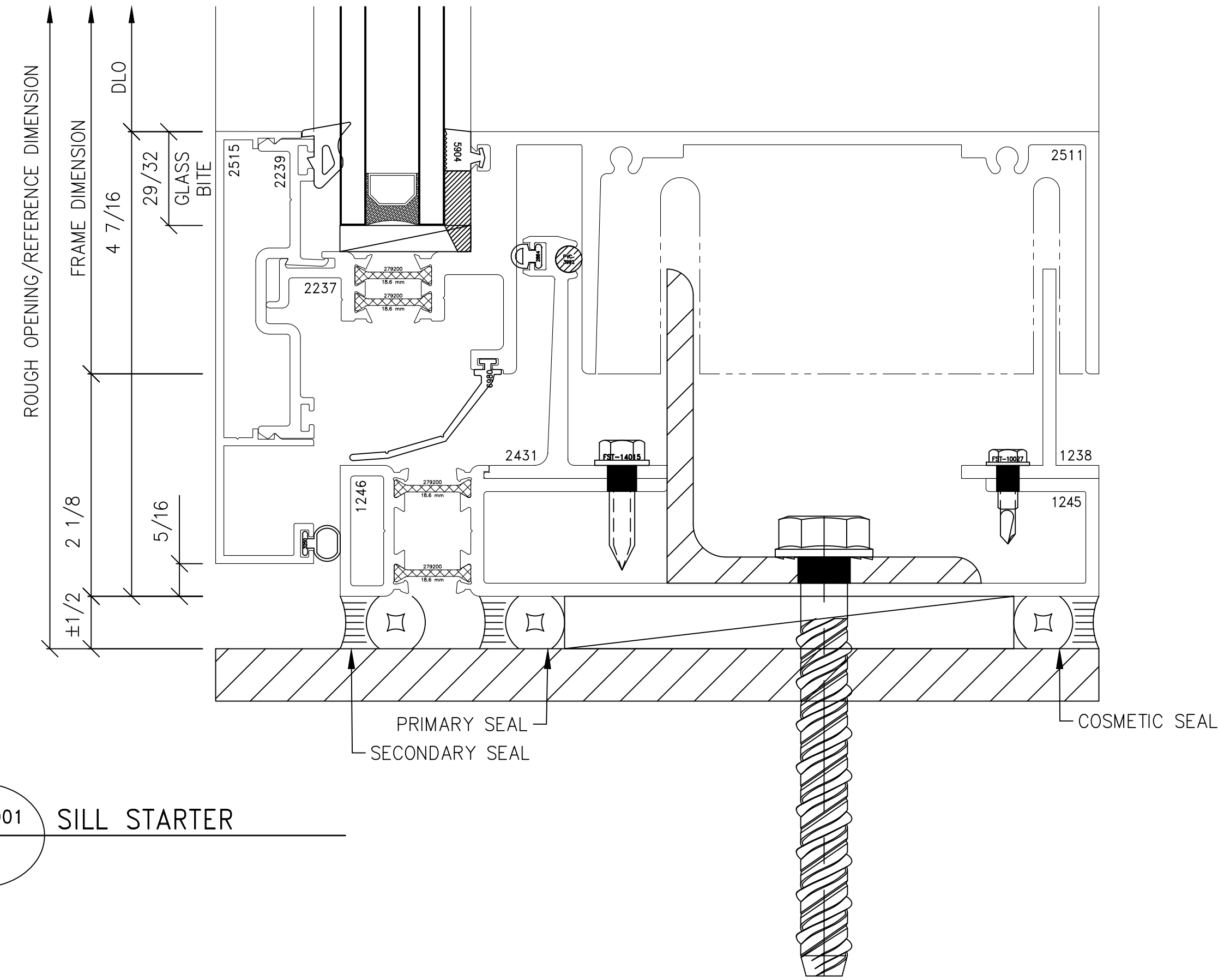
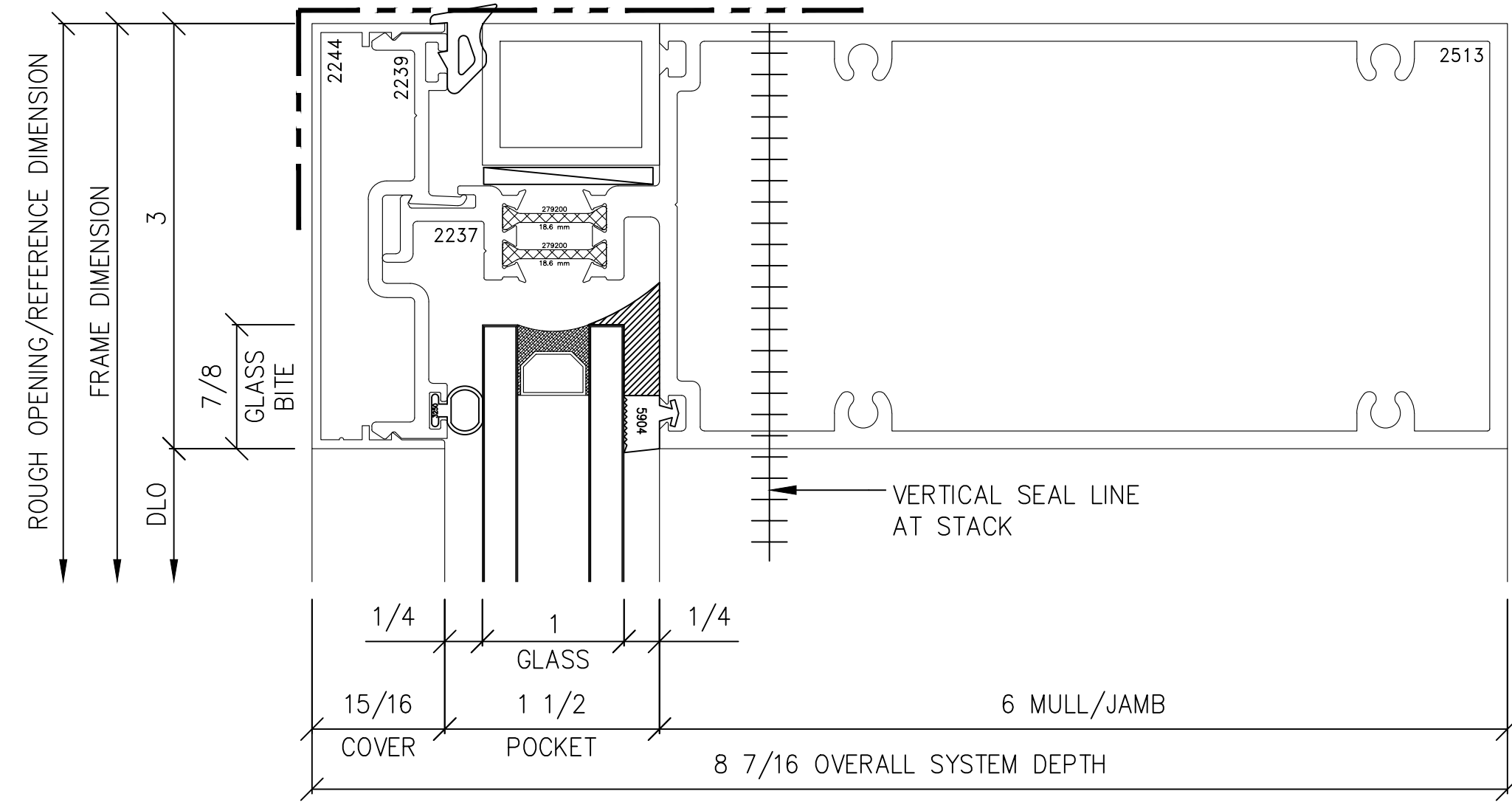


<b>PROJECT:</b> US8375 UNITIZED (3" WIDE)		<b>DRAWN BY:</b> TAS	<b>NO.</b>	<b>DATE</b>	<b>BY</b>
<b>LOCATION:</b>		<b>DATE:</b> 10/16/23	<b>NO.</b>	<b>DATE</b>	<b>BY</b>
<b>ARCHITECT:</b>		<b>GENERAL NOTES:</b>			
<b>CONTRACTOR:</b>		1) Contractor to verify all dimensions in the field. All framing will be manufactured to the dimensions indicated unless otherwise noted. 2) Architect to review all conditions for compliance to contract documents and, if required, provide correct details and/or dimensions to ensure proper coordination. 3) Drawings marked "approved" or "approved as noted" shall be interpreted as an accurate condition of job requirements and such approval shall authorize release to fabrication. 4) Fremaraq shall not be responsible for any errors and/or work that occurs from the use of these drawings by other trades.			
<b>Fremaraq INNOVATIONS</b> <small>1101 NORTH MILL STREET    PE: (715) 842-6842          MERRILL, WISCONSIN 54452          WWW.FREMARQINNOVATIONS.COM</small>		<b>JOB NUMBER</b>			
<b>SHEET TITLE</b> ELEVATION SHEET		<b>DRAWING SCALE</b> 11x17 = 6" = 1'-0" 22x34 = 12" = 1'-0"			
<b>DRAWING NO.</b> E01		<b>REVISIONS</b>			

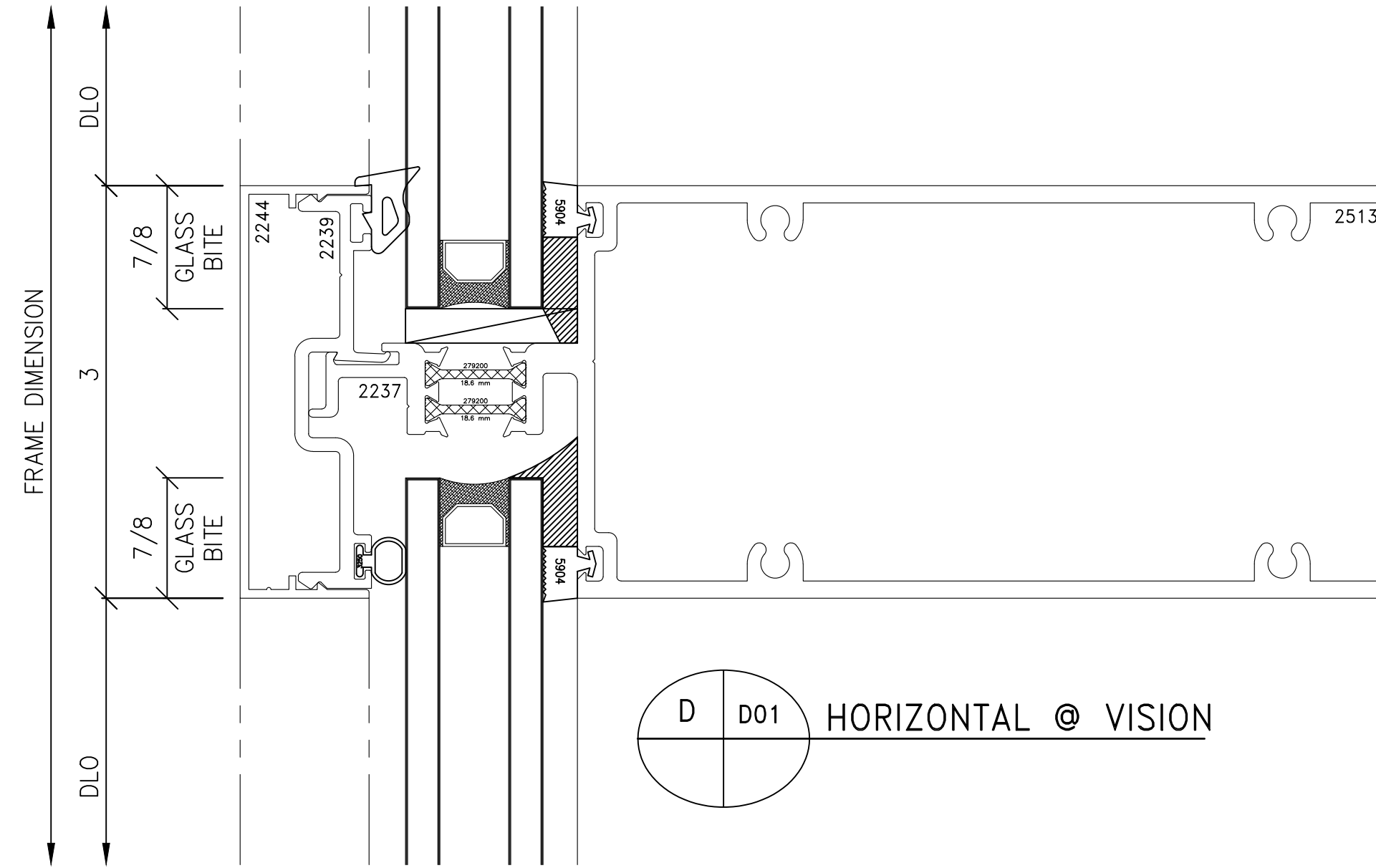
**B** D01 SILL STARTER



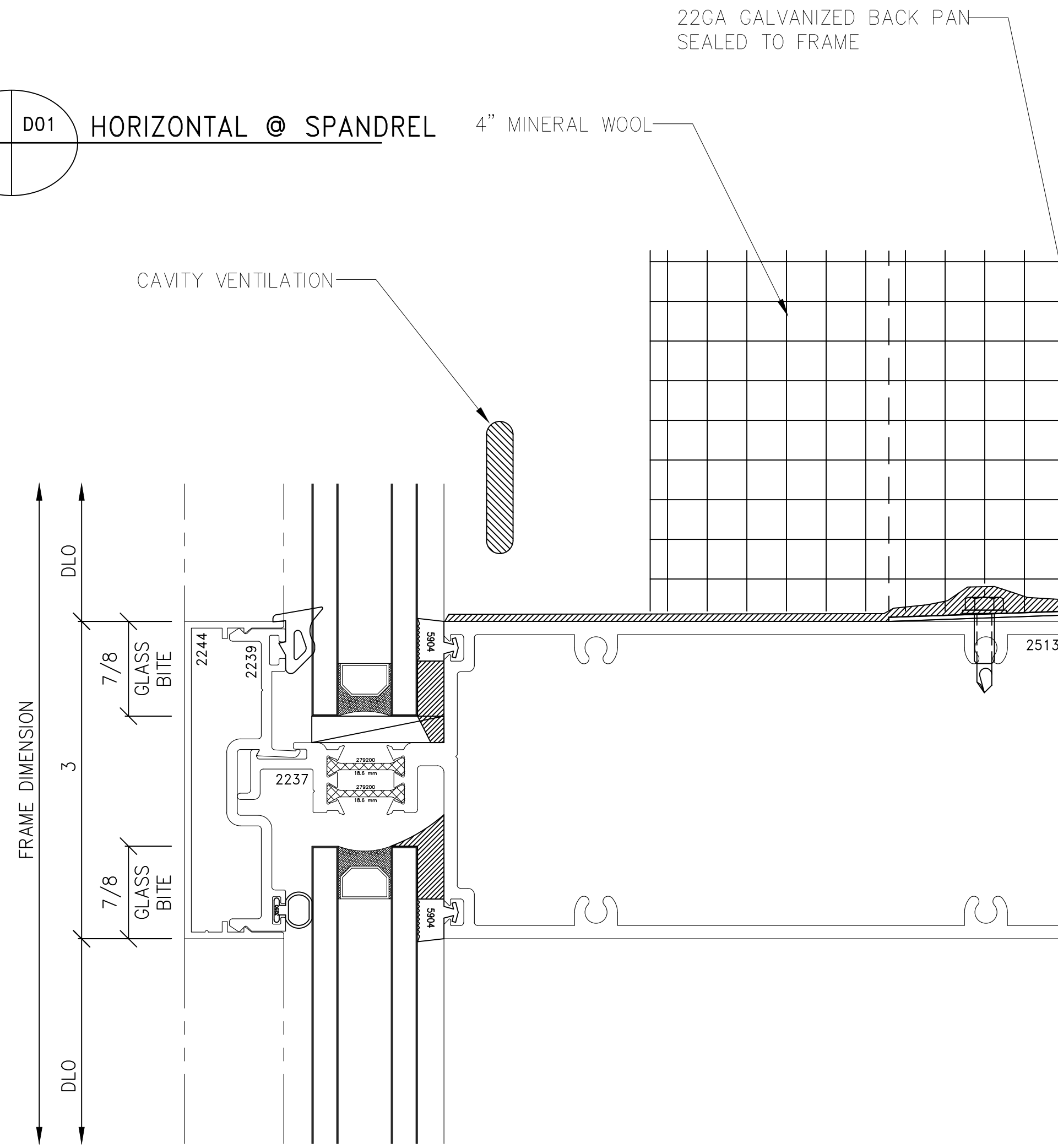
**A** D01 VISION HEAD



**D** D01 HORIZONTAL @ VISION



**C** D01 HORIZONTAL @ SPANDREL



PROJECT:

US8375 UNITIZED (3" WIDE)

LOCATION:

ARCHITECT:

CONTRACTOR:

DRAWN BY: TAF

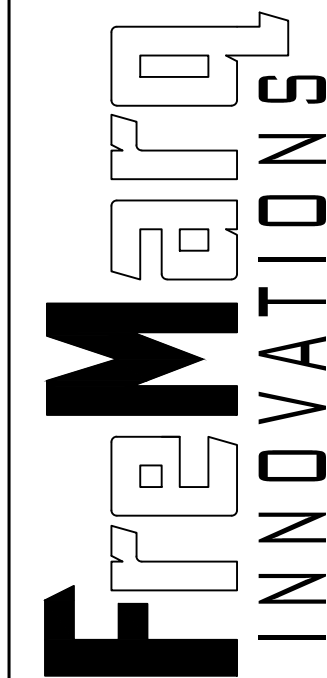
DATE: 10/16/23

NO.

DATE

BY

REVISIONS



1101 NORTH MILL STREET  
MERRILL, WISCONSIN 54452  
WWW.FREMARAINNOVATIONS.COM

JOB NUMBER

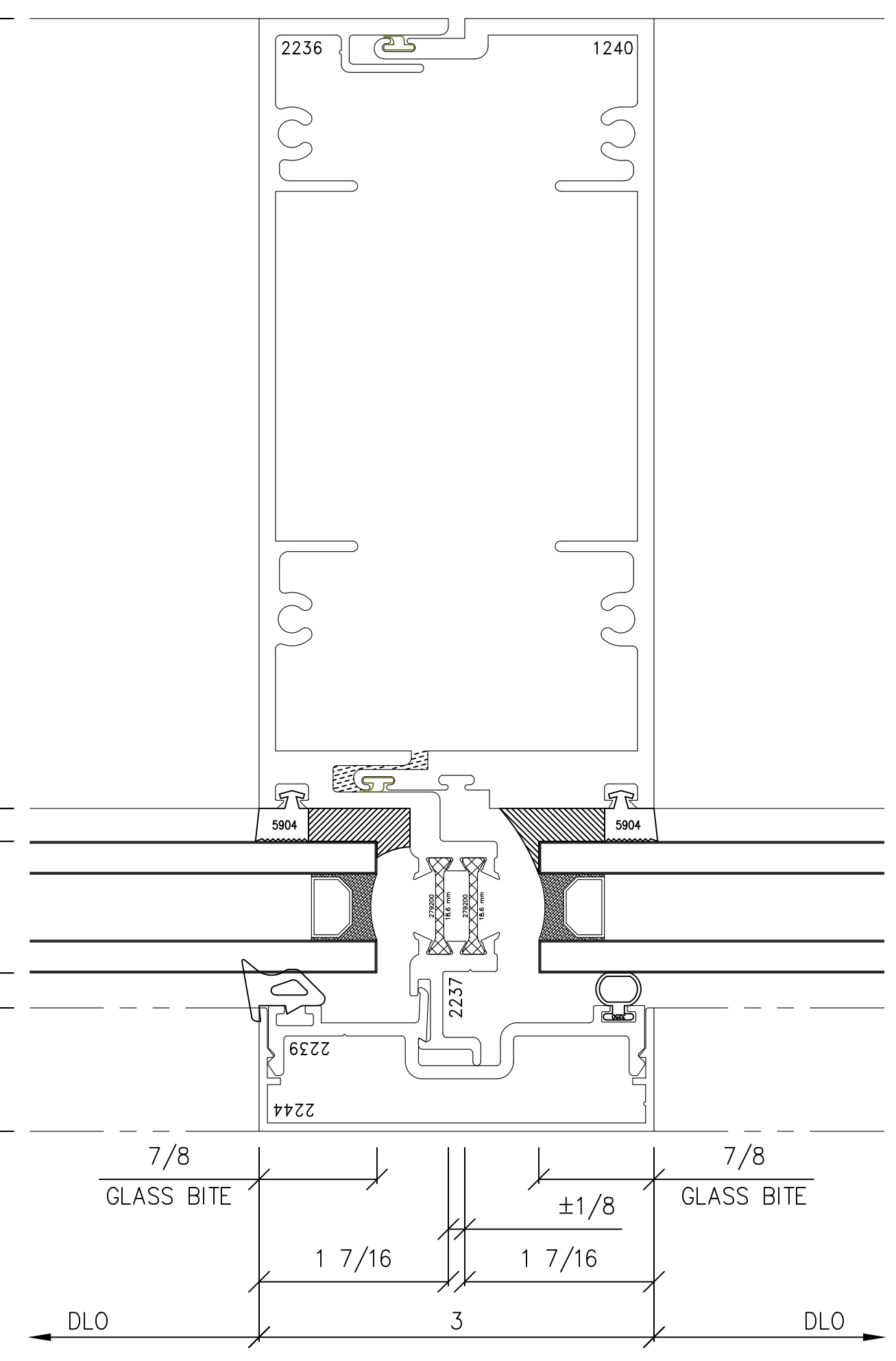
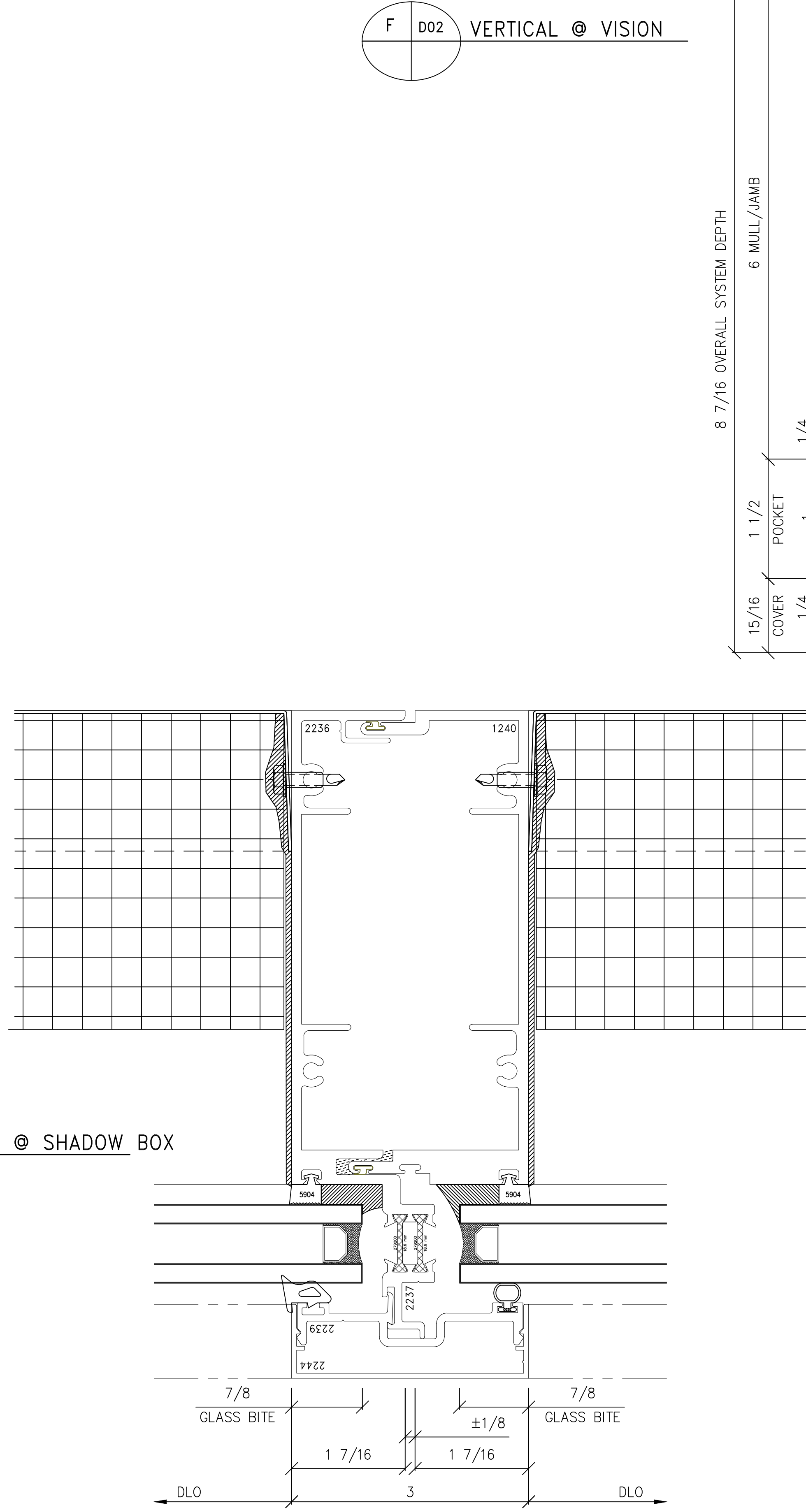
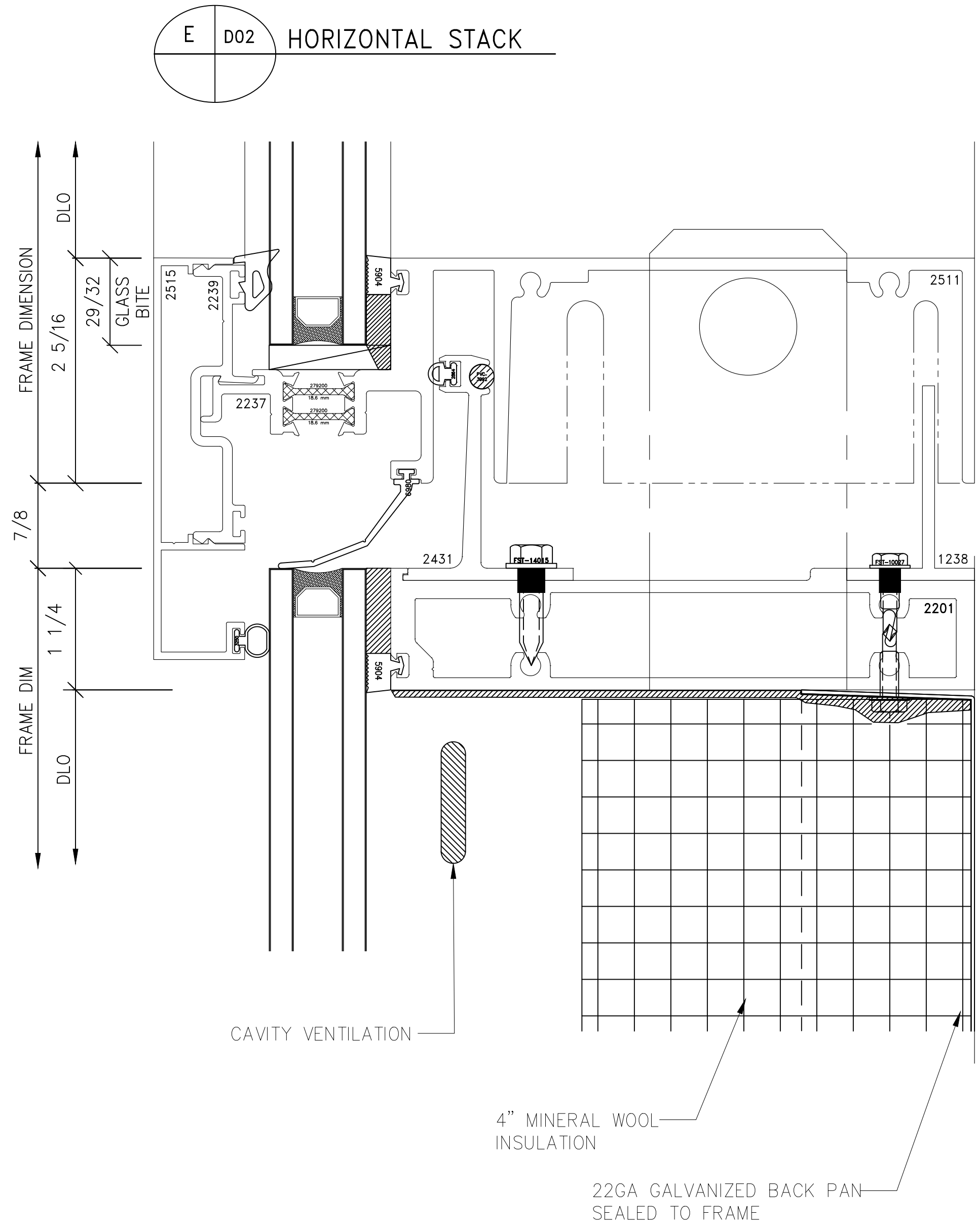
SHEET TITLE  
DETAIL SHEET

DRAWING SCALE  
11x17 = 6" = 1'-0"  
22x34 = 12" = 1'-0"

DRAWING NO.

D01

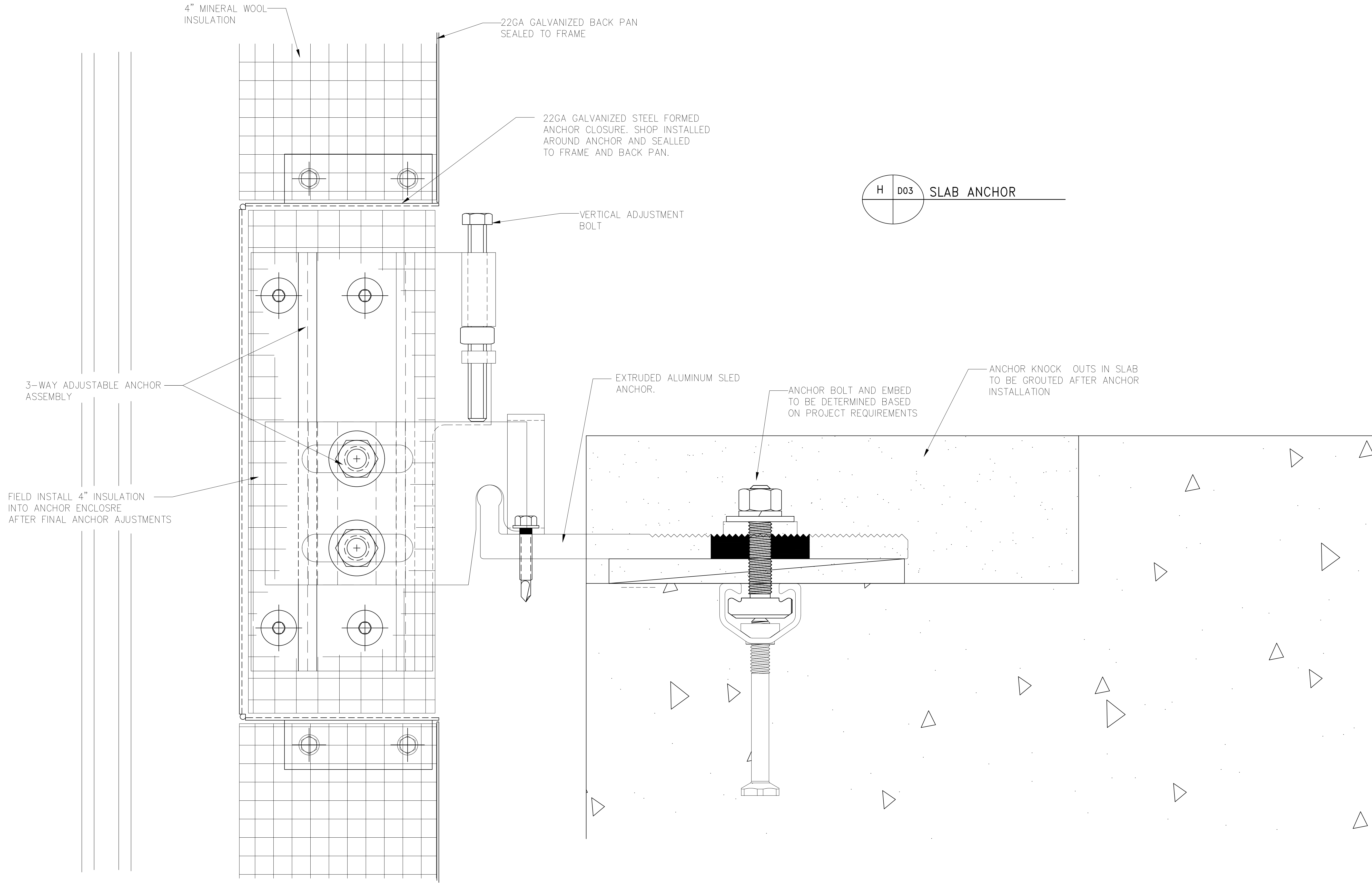
GENERAL NOTES:  
1) Contractor to verify all dimensions in the field. All framing will be manufactured to the dimensions indicated unless otherwise noted.  
2) Architect to review all conditions for compliance to contract documents and, if required, provide correct details and/or dimensions to ensure proper coordination.  
3) Drawings marked 'approved' or 'approved as noted' shall be interpreted as an accurate condition of job requirements and such approval shall authorize release to fabrication.  
4) Fremara shall not be responsible for any errors and/or work that occurs from the use of these drawings by other trades.



<b>PROJECT:</b> US8375 UNITIZED (3" WIDE)		<b>DRAWN BY:</b> TAF	<b>NO.</b>	<b>DATE</b>	<b>BY</b>	<b>REVISIONS</b>
<b>LOCATION:</b>		<b>DATE:</b> 10/16/23	<b>NO.</b>	<b>DATE</b>	<b>BY</b>	<b>REVISIONS</b>
<b>ARCHITECT:</b>		<b>GENERAL NOTES:</b>				
<b>CONTRACTOR:</b>		1) Contractor to verify all dimensions in the field. All framing will be manufactured to the dimensions indicated unless otherwise noted.				
		2) Architect to review all conditions for compliance to contract documents and, if required, provide correct details and/or dimensions to ensure proper coordination.				
		3) Drawings marked "approved" or "approved as noted" shall be interpreted as an accurate condition of job requirements and such approval shall authorize release to fabrication.				
		4) Fremara shall not be responsible for any errors and/or work that occurs from the use of these drawings by other trades.				

1101 NORTH MILL STREET  
MERRILL, WISCONSIN 54452  
WWW.FREMARAINNOVATIONS.COM

<b>JOB NUMBER</b>
<b>SHEET TITLE</b> DETAIL SHEET
<b>DRAWING SCALE</b> 11x17 = 6" = 1'-0" 22x34 = 12" = 1'-0"
<b>DRAWING NO.</b> D02

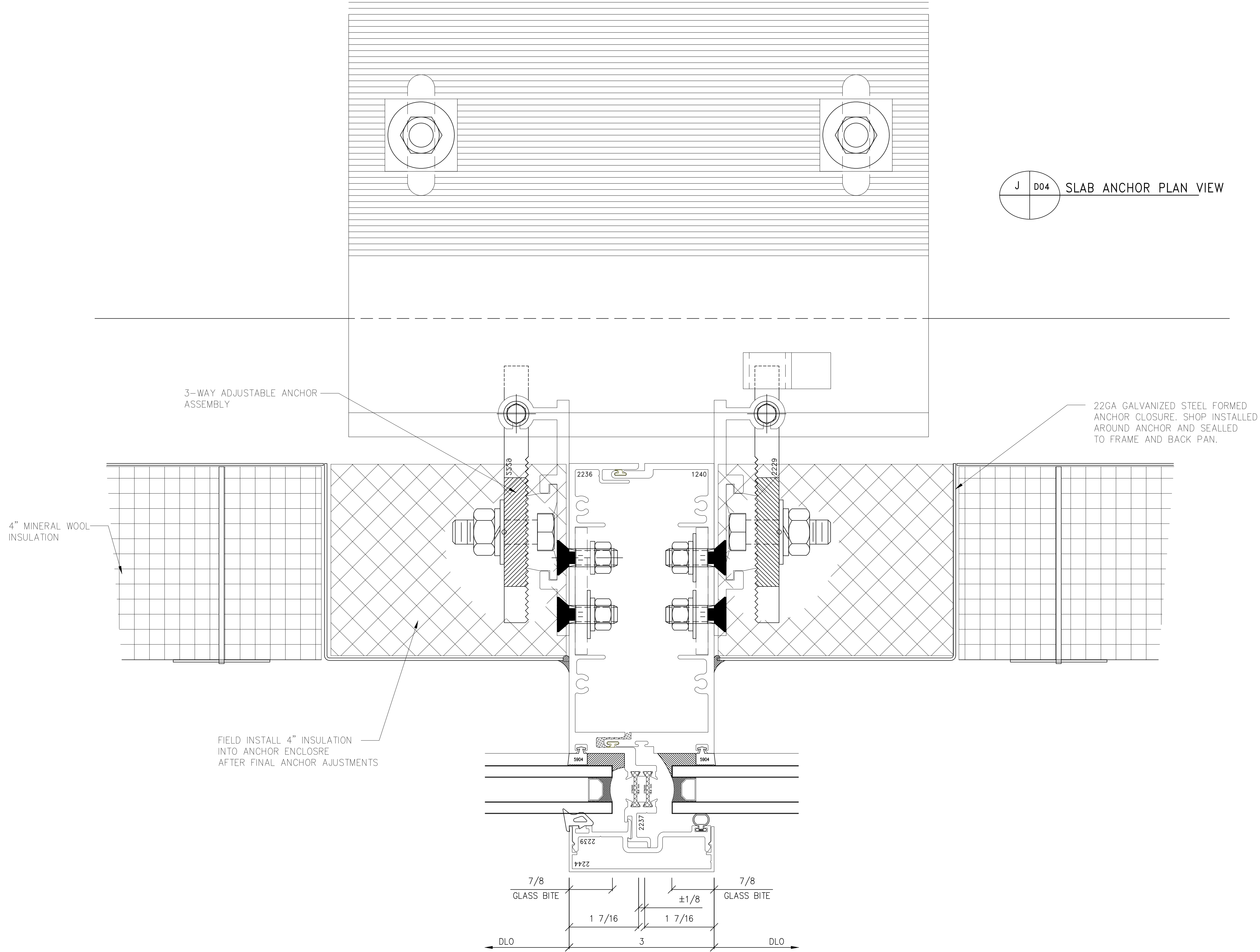


H D03 SLAB ANCHOR

PROJECT:		US8375 UNITIZED (3" WIDE)	
LOCATION:			
ARCHITECT:			
CONTRACTOR:			
DRAWN BY:		TAF	
DATE:		10/16/23	
NO.		BY	
REVISIONS			
<b>GENERAL NOTES:</b> 1) Contractor to verify all dimensions in the field. All framing will be manufactured to the dimensions indicated unless otherwise noted. 2) Architect to review all conditions for compliance to contract documents and, if required, provide correct details and/or dimensions to ensure proper coordination. 3) Drawings marked "approved" or "approved as noted" shall be interpreted as an accurate condition of job requirements and such approval shall authorize release to fabrication. 4) Fremaraq shall not be responsible for any errors and/or work that occurs from the use of these drawings by other trades.			

**Fremaraq**  
**INNOVATIONS**  
 1101 NORTH MILL STREET    PH: (715) 842-6842  
 MERRILL, WISCONSIN 54452  
 WWW.FREMARQINNOVATIONS.COM

JOB NUMBER  
 SHEET TITLE  
**DETAIL SHEET**  
 DRAWING SCALE  
 11x17 = 6" = 1'-0"  
 22x34 = 12" = 1'-0"  
 DRAWING NO.  
**D03**



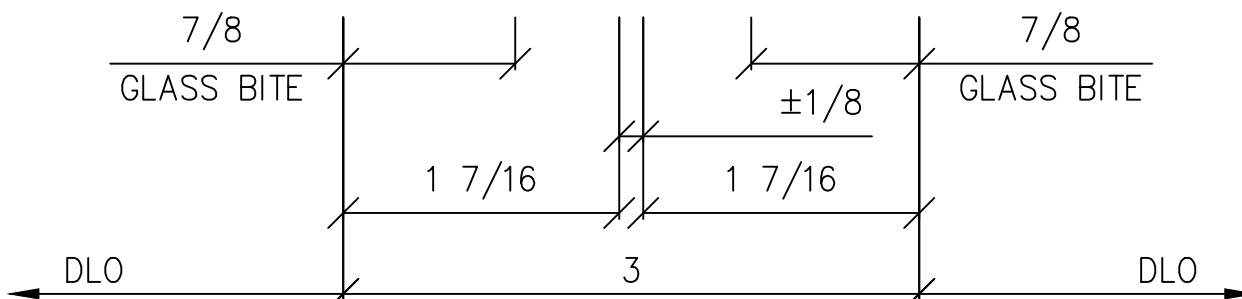
J D04 SLAB ANCHOR PLAN VIEW

3-WAY ADJUSTABLE ANCHOR ASSEMBLY

22GA GALVANIZED STEEL FORMED ANCHOR CLOSURE. SHOP INSTALLED AROUND ANCHOR AND SEALED TO FRAME AND BACK PAN.

4" MINERAL WOOL INSULATION

FIELD INSTALL 4" INSULATION INTO ANCHOR ENCLOSURE AFTER FINAL ANCHOR ADJUSTMENTS



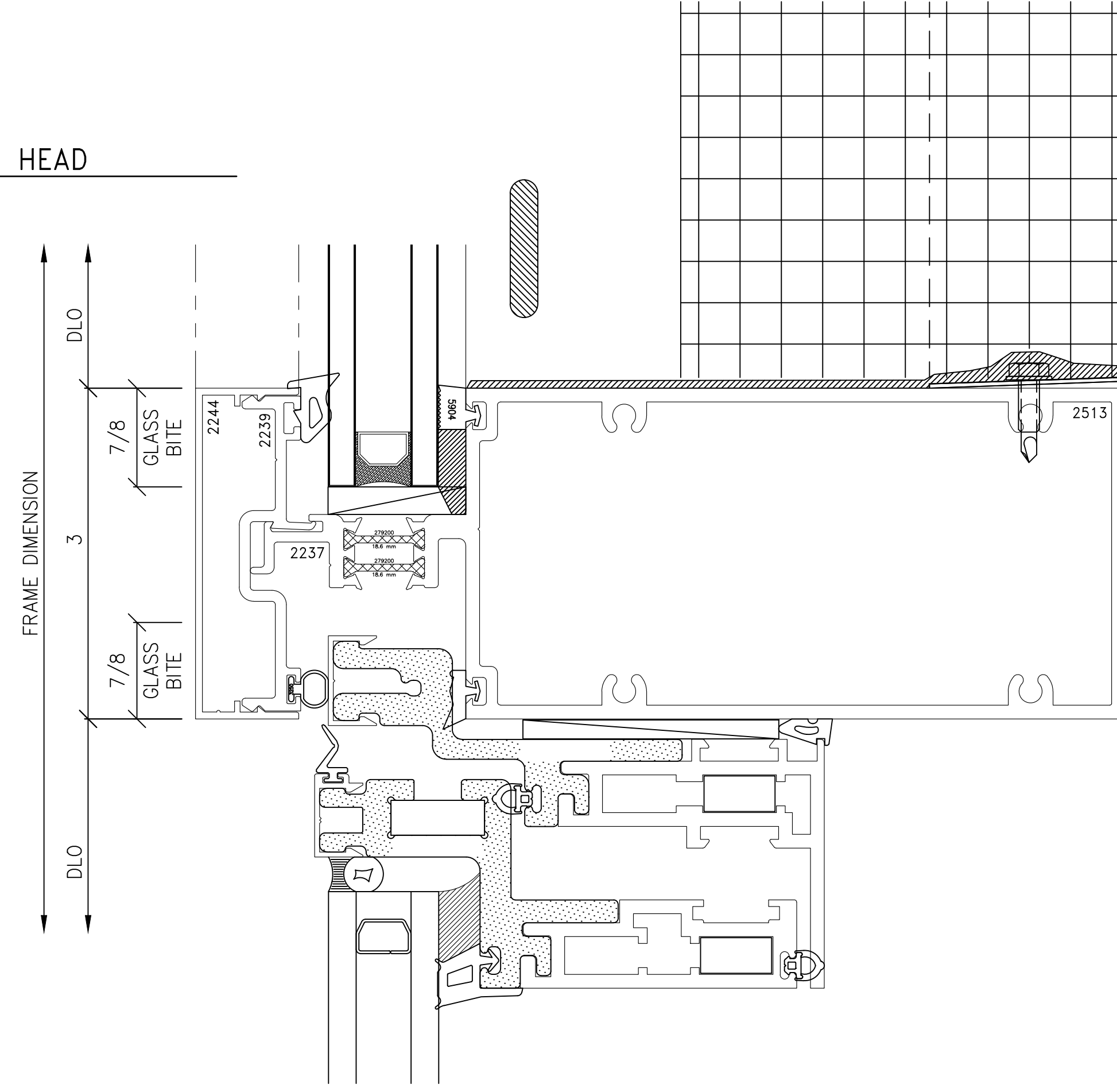
PROJECT:	US8375 UNITIZED (3" WIDE)
LOCATION:	
ARCHITECT:	
CONTRACTOR:	
DRAWN BY:	TAF
DATE:	10/16/23
NO.	
DATE	BY
REVISIONS	

GENERAL NOTES:  
 1) Contractor to verify all dimensions in the field. All framing will be manufactured to the dimensions indicated unless otherwise noted.  
 2) Architect to review all conditions for compliance to contract documents and, if required, provide correct details and/or dimensions to ensure proper coordination.  
 3) Drawings marked "approved" or "approved as noted" shall be interpreted as an accurate condition of job requirements and such approval shall authorize release to fabrication.  
 4) Fremara shall not be responsible for any errors and/or work that occurs from the use of these drawings by other trades.

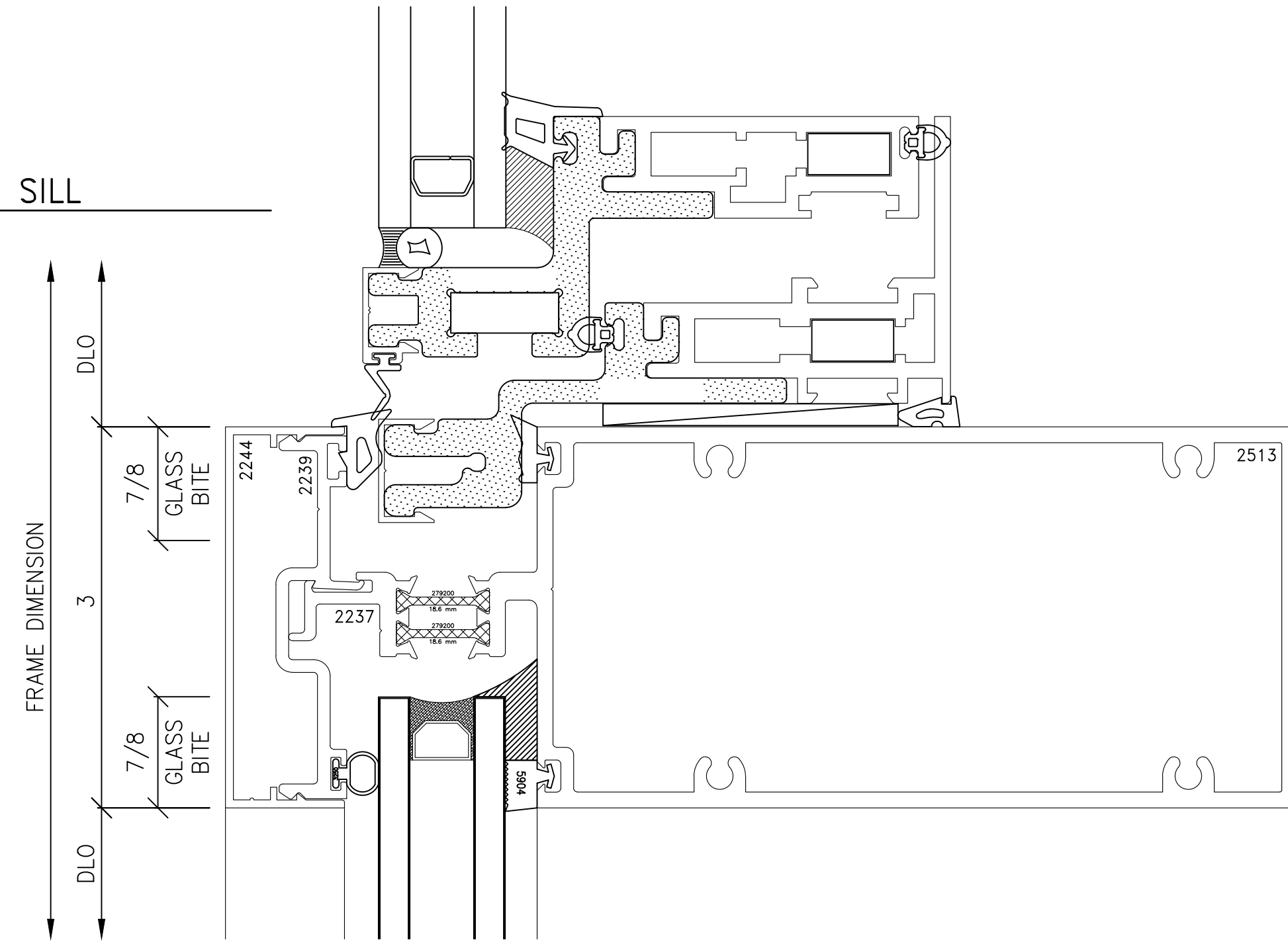
**Fremara**  
 INNOVATIONS  
 1101 NORTH MILL STREET  
 MERRILL, WISCONSIN 54452  
 PE: (715) 842-6842  
 WWW.FREMARAINNOVATIONS.COM

JOB NUMBER	
SHEET TITLE	DETAIL SHEET
DRAWING SCALE	11x17 = 6" = 1'-0" 22x34 = 12" = 1'-0"
DRAWING NO.	D04

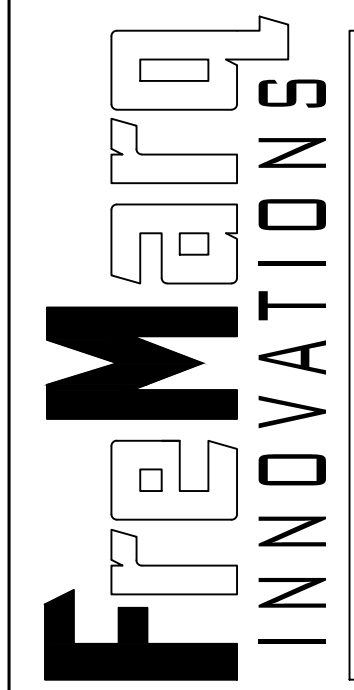
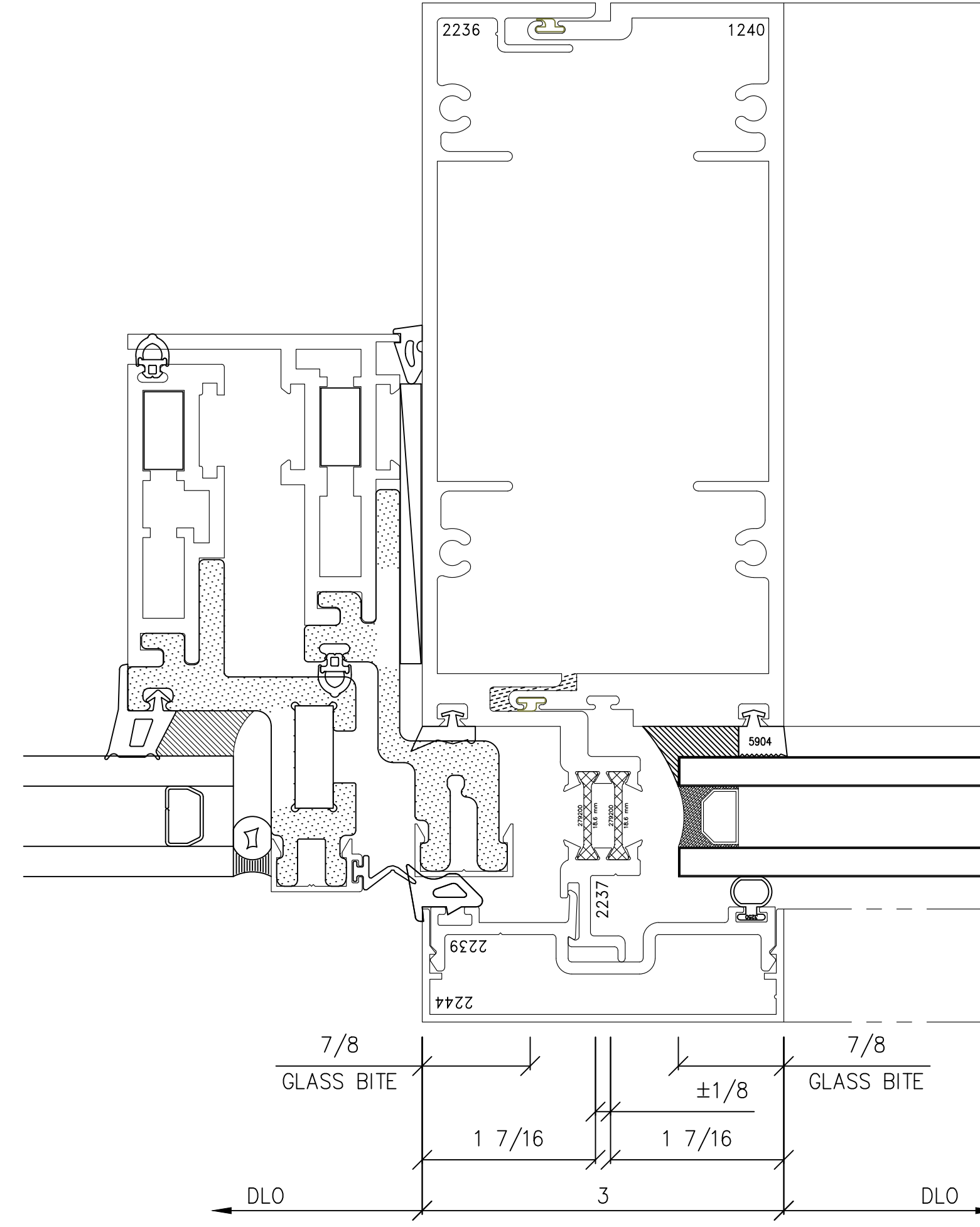
K D05 VENT HEAD



L D05 VENT SILL



M D05 VENT JAMB



1101 NORTH MILL STREET  
MERRILL, WISCONSIN 54452  
WWW.FREMARAINNOVATIONS.COM

PROJECT: US8375 UNITIZED (3" WIDE)

LOCATION:

ARCHITECT:

CONTRACTOR:

DRAWN BY: TAF

DATE: 10/16/23

NO.

DATE

BY

REVISIONS

GENERAL NOTES:

- 1) Contractor to verify all dimensions in the field. All framing will be manufactured to the dimensions indicated unless otherwise noted.
- 2) Architect to review all conditions for compliance to contract documents and, if required, provide correct details and/or dimensions to ensure proper coordination.
- 3) Drawings marked "approved" or "approved as noted" shall be interpreted as an accurate condition of job requirements and such approval shall authorize release to fabrication.
- 4) Fremara shall not be responsible for any errors and/or work that occurs from the use of these drawings by other trades.

JOB NUMBER

SHEET TITLE  
DETAIL SHEET

DRAWING SCALE  
11x17 = 6" = 1'-0"  
22x34 = 12" = 1'-0"

DRAWING NO.

D05