

PROJECT: <b>US7375 UNITIZED</b>		NO.	DATE	BY	REVISIONS
LOCATION:		DRAWN BY:			
ARCHITECT:		DATE:			
CONTRACTOR:		NO.			
CONTRACTOR:		DATE			
CONTRACTOR:		BY			
<b>GENERAL NOTES:</b> 1) Contractor to verify all dimensions in the field. All framing will be manufactured to the dimensions indicated unless otherwise noted. 2) Architect to review all conditions for compliance to contract documents and, if required, provide correct details and/or dimensions to ensure proper coordination. 3) Drawings marked "approved" or "approved as noted" shall be interpreted as an accurate condition of job requirements and such approval shall authorize release to fabrication. 4) Fremaraq shall not be responsible for any errors and/or work that occurs from the use of these drawings by other trades.					

**Fremaraq**  
**INNOVATIONS**  
 1101 NORTH MILL STREET    PH: (715) 842-6842  
 MERRILL, WISCONSIN 54452  
 WWW.FREMARQINNOVATIONS.COM

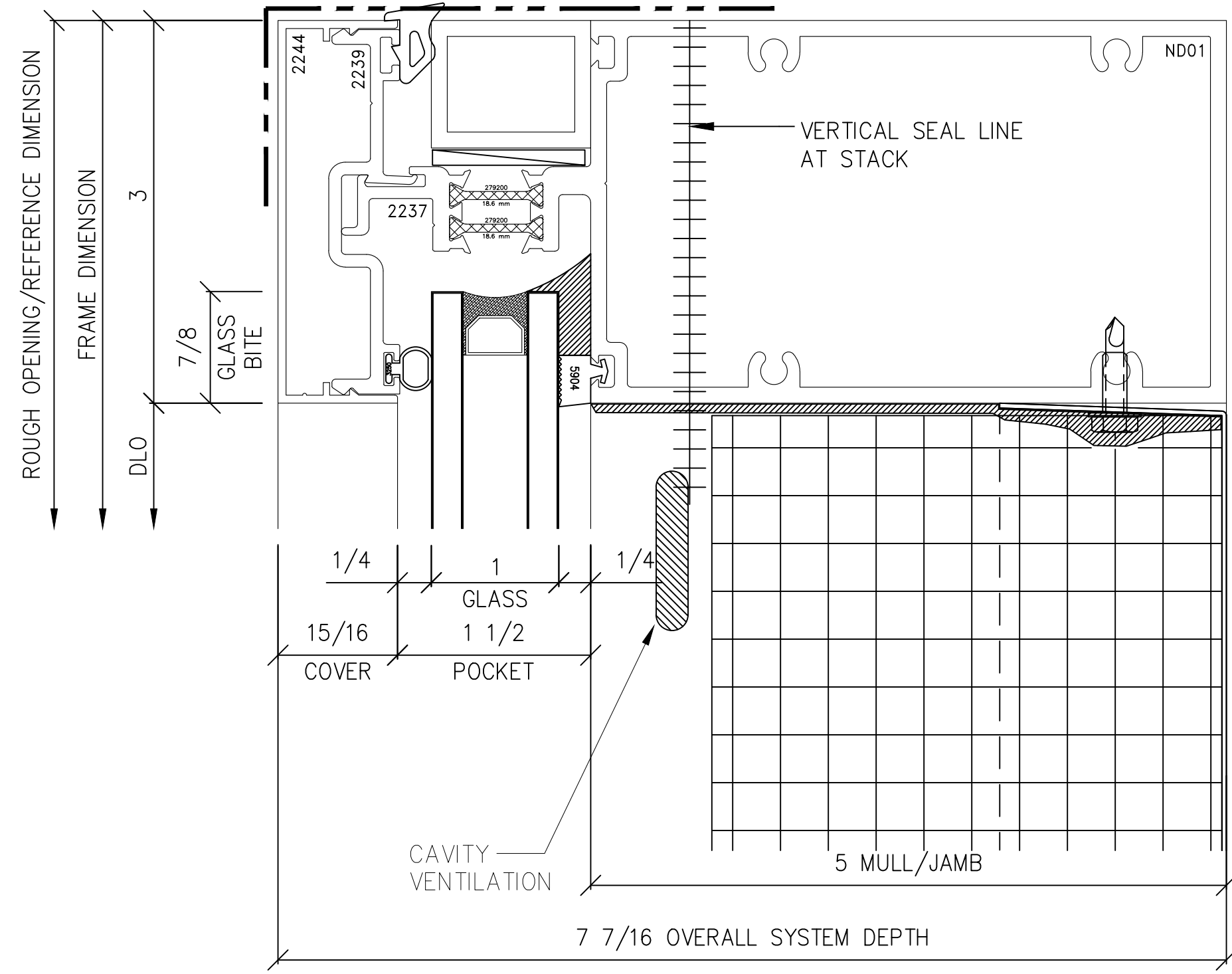
JOB NUMBER

SHEET TITLE  
**ELEVATION SHEET**

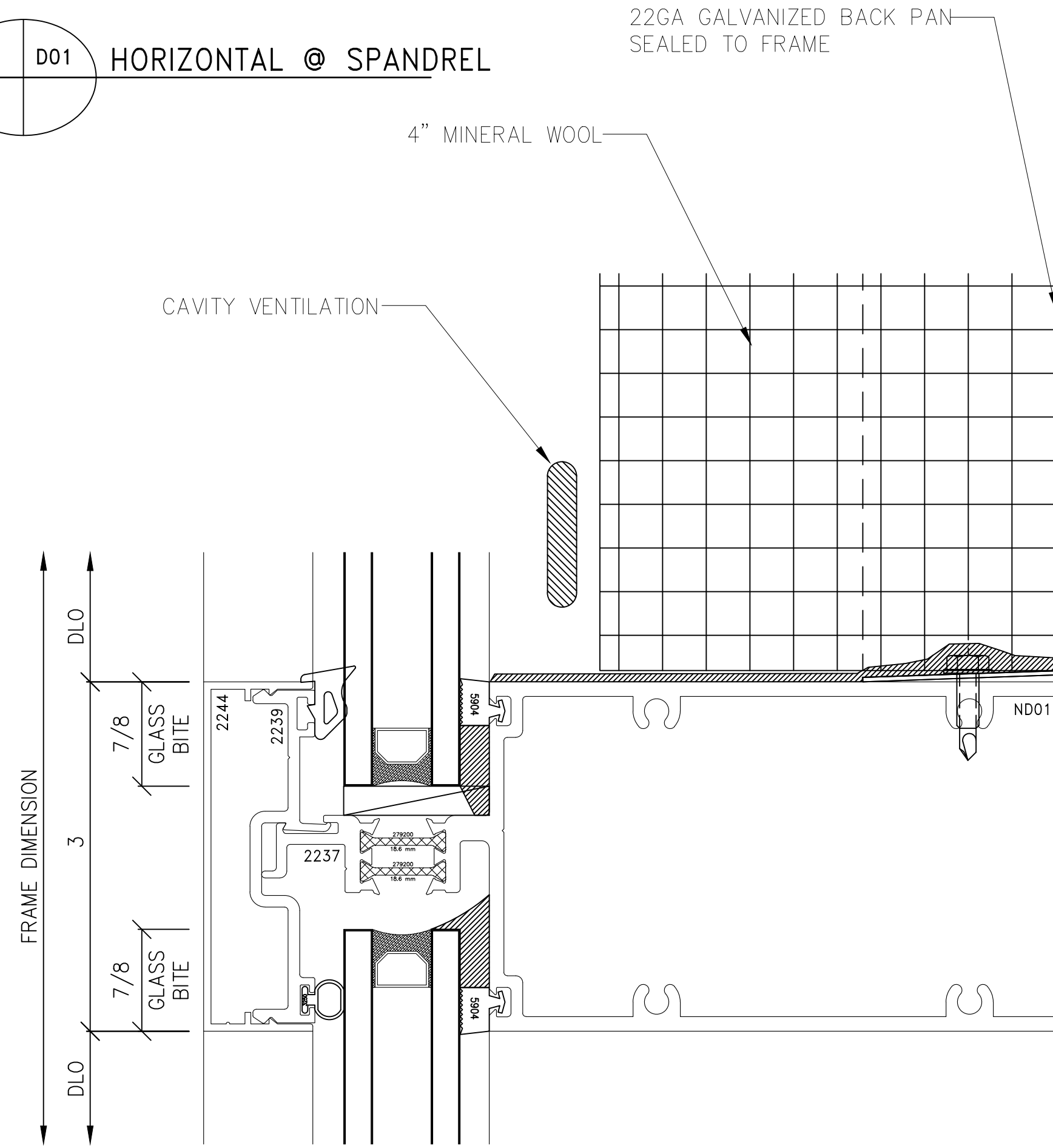
DRAWING SCALE  
 11x17 = 6" = 1'-0"  
 22x34 = 12" = 1'-0"

DRAWING NO.  
**E01**

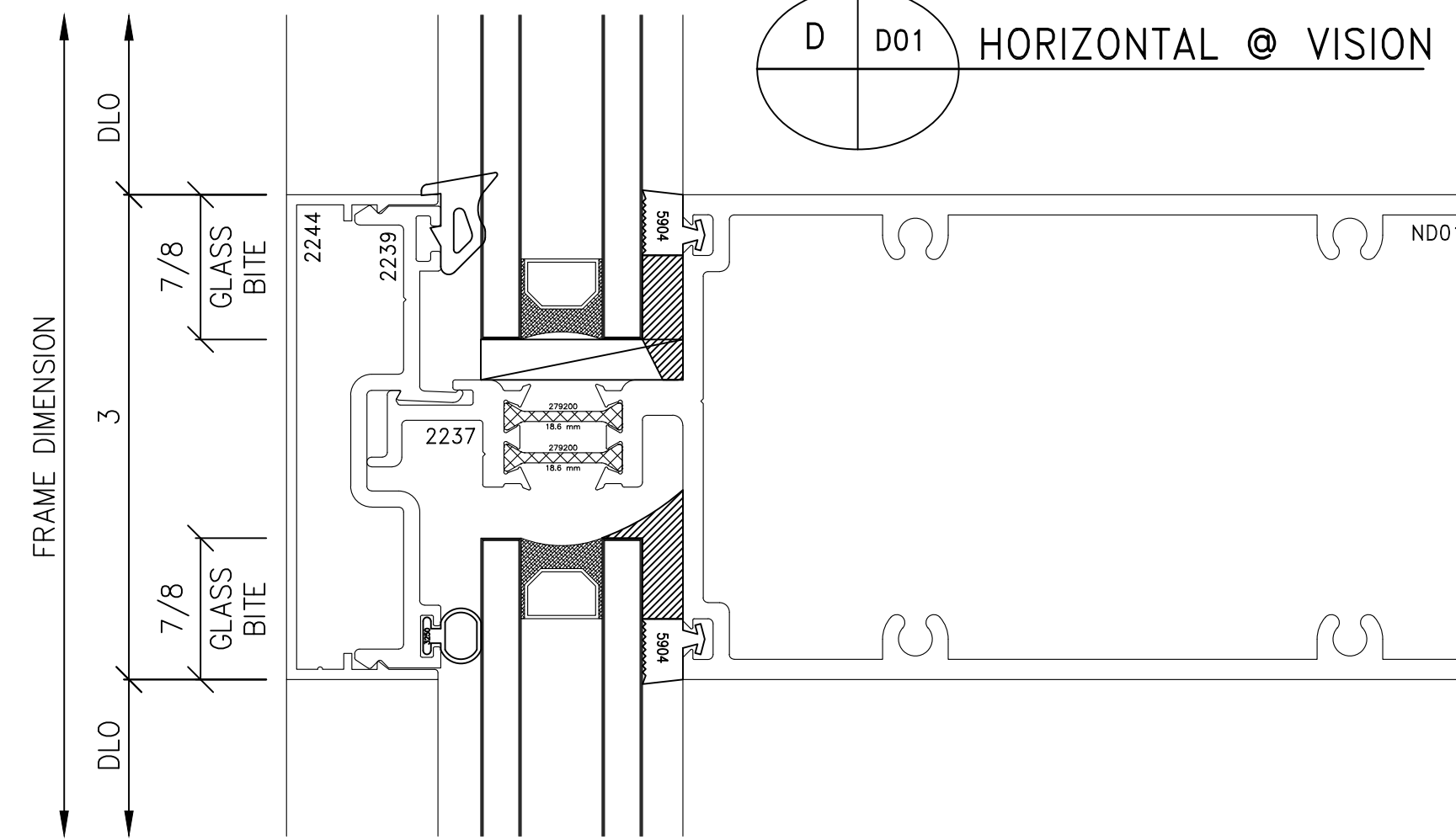
A D01 VISION HEAD



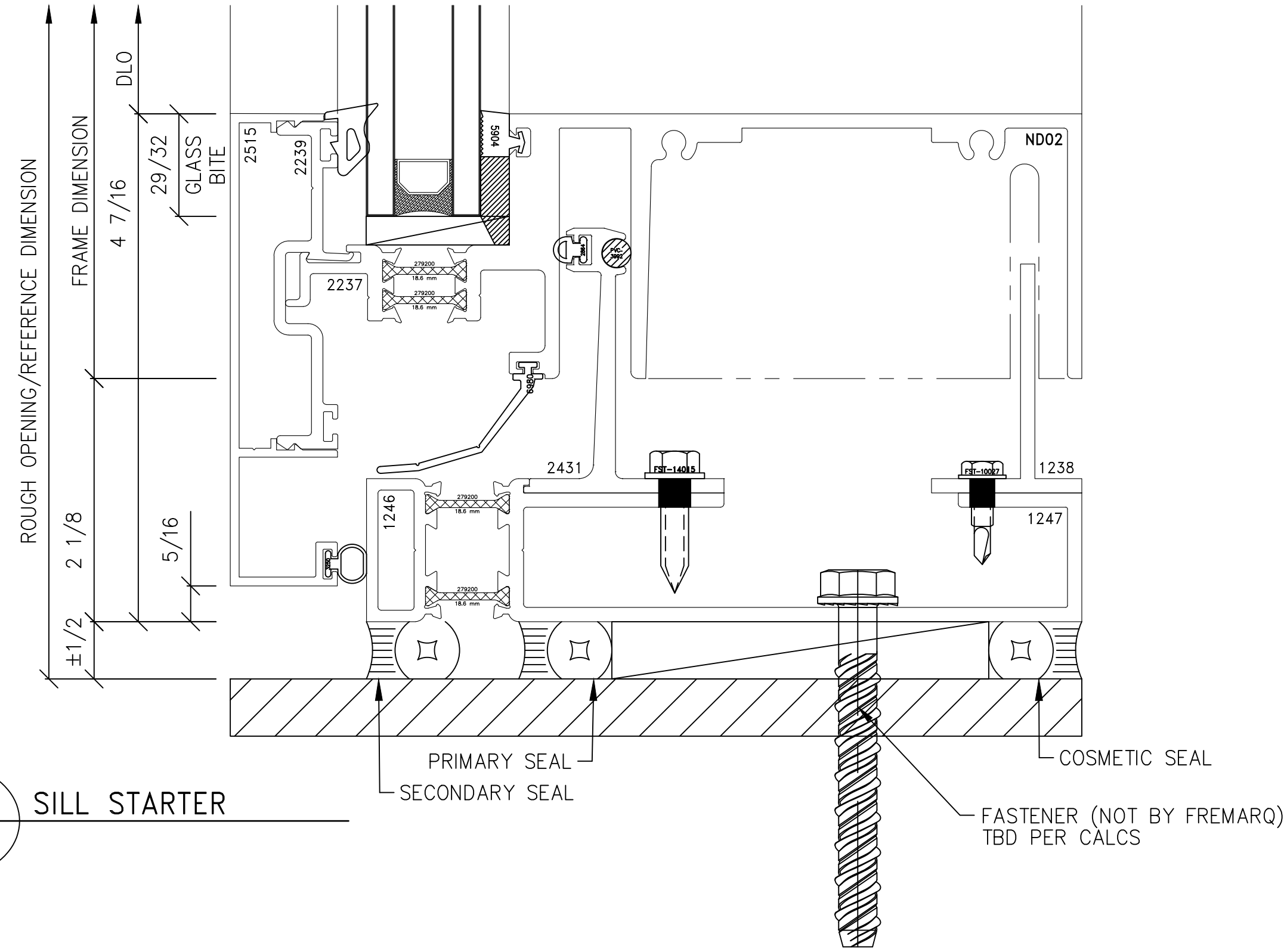
C D01 HORIZONTAL @ SPANDREL



D D01 HORIZONTAL @ VISION

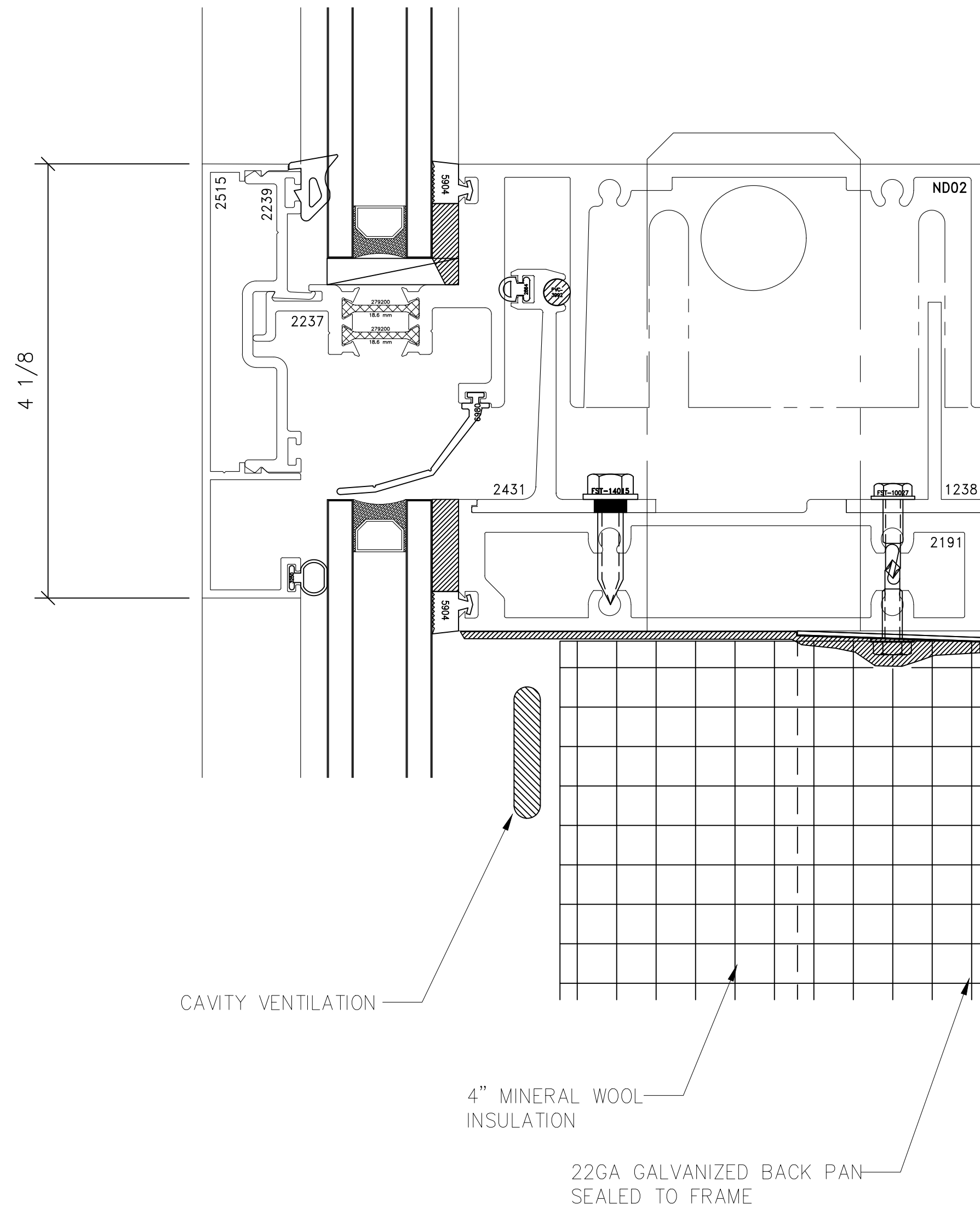


B D01 SILL STARTER

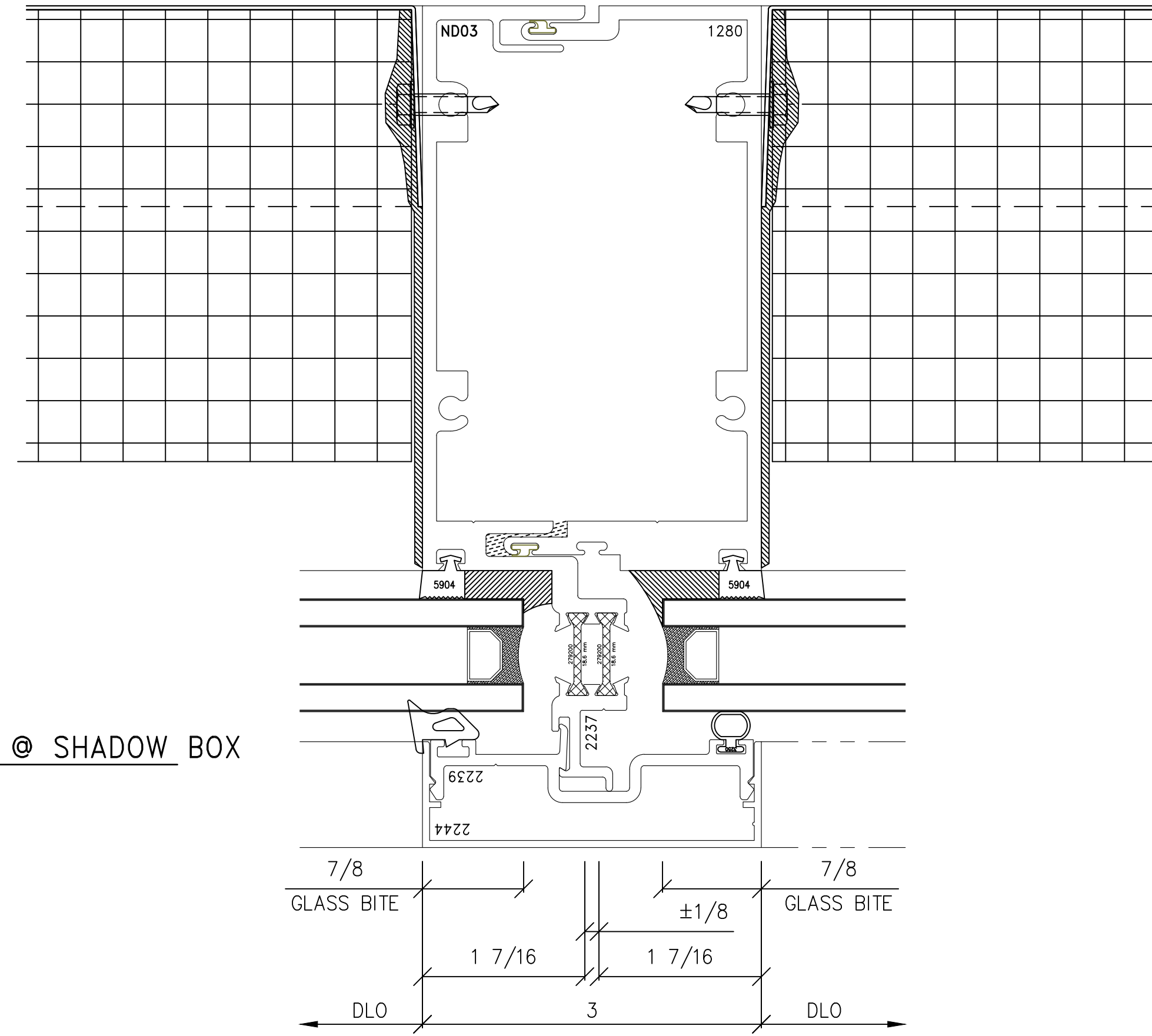


PROJECT: US7375 STRUTTED UNITIZED		DRAWN BY: TAF		NO.		REVISIONS	
LOCATION:		DATE: 10/16/23		NO.		DATE	
ARCHITECT:		BY		NO.		DATE	
CONTRACTOR:		BY		NO.		DATE	
<p><b>FremarQ INNOVATIONS</b>          1101 NORTH MILL STREET MERRILL, WISCONSIN 54452          PE: (715) 842-6842          WWW.FREMARQINNOVATIONS.COM</p>							
JOB NUMBER							
SHEET TITLE DETAIL SHEET							
DRAWING SCALE 11x17 = 6" = 1'-0" 22x34 = 12" = 1'-0"							
DRAWING NO. D01							
<p>GENERAL NOTES:          1) Contractor to verify all dimensions in the field. All framing will be manufactured to the dimensions indicated unless otherwise noted.          2) Architect to review all conditions for compliance to contract documents and, if required, provide correct details and/or dimensions to ensure proper coordination.          3) Drawings marked 'approved' or 'approved as noted' shall be interpreted as an accurate condition of job requirements and such approval shall authorize release to fabrication.          4) FremarQ shall not be responsible for any errors and/or work that occurs from the use of these drawings by other trades.</p>							

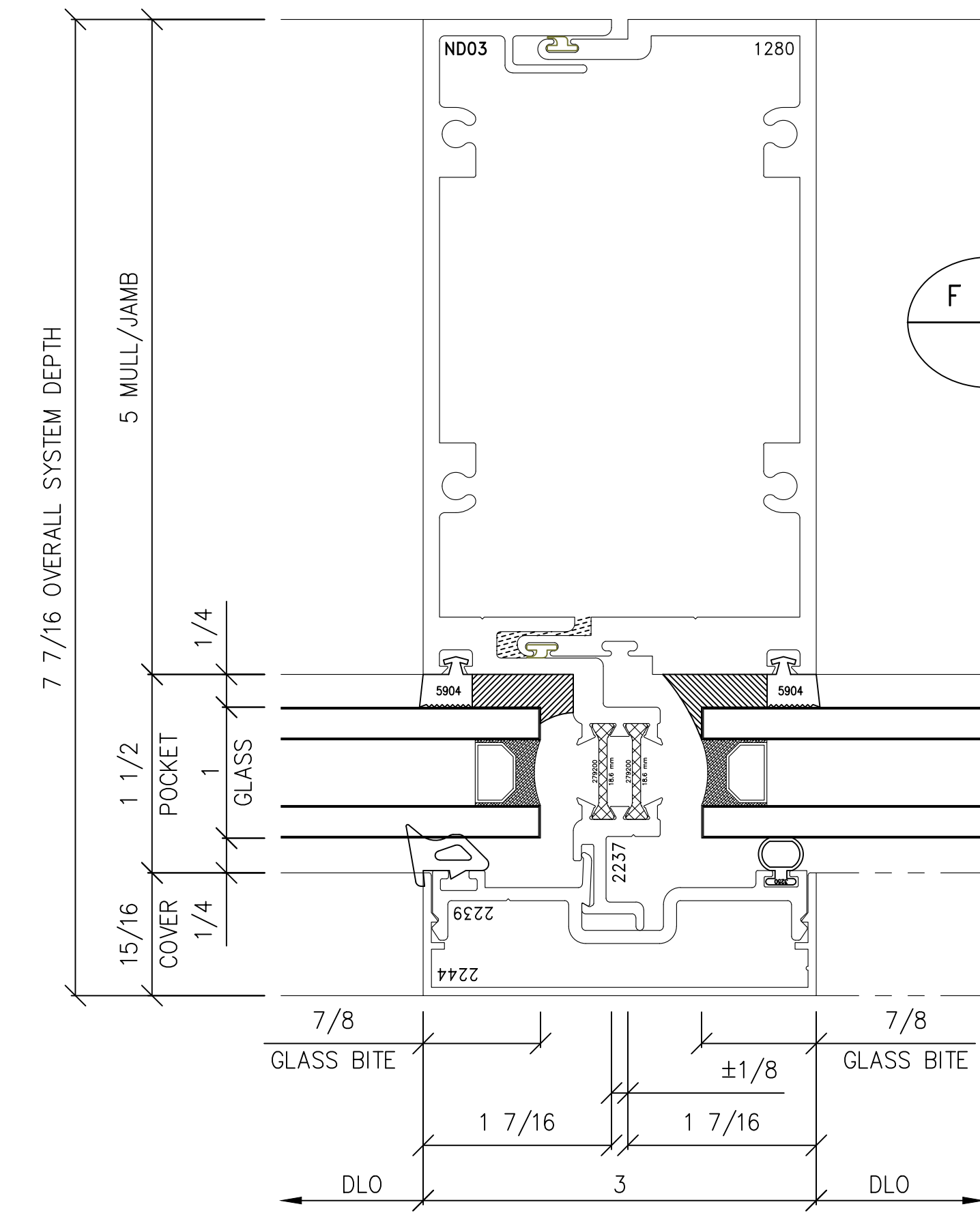
E D02 HORIZONTAL STACK



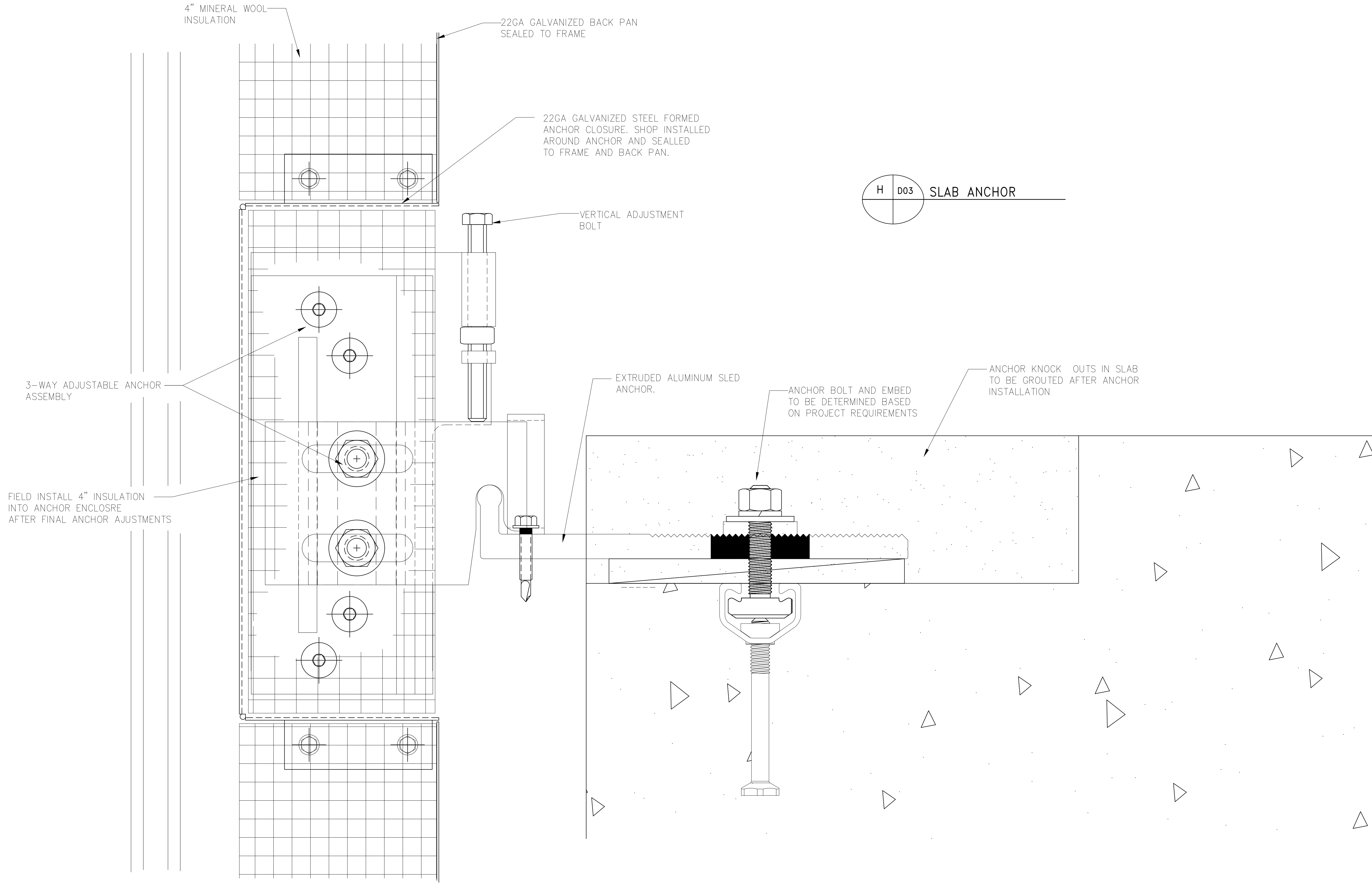
G D02 VERTICAL @ SHADOW BOX



F D02 VERTICAL @ VISION



PROJECT:		US7375 STRUTTED UNITIZED	
LOCATION:			
ARCHITECT:			
CONTRACTOR:			
JOB NUMBER			
SHEET TITLE		DETAIL SHEET	
DRAWING SCALE		11x17 = 6" = 1'-0" 22x34 = 12" = 1'-0"	
DRAWING NO.		D02	
DRAWN BY: TAF		NO. DATE BY	
DATE: 10/16/23		REVISIONS	
<p>GENERAL NOTES:</p> <p>1) Contractor to verify all dimensions in the field. All framing will be manufactured to the dimensions indicated unless otherwise noted.</p> <p>2) Architect to review all conditions for compliance to contract documents and, if required, provide correct details and/or dimensions to ensure proper coordination.</p> <p>3) Drawings marked 'approved' or 'approved as noted' shall be interpreted as an accurate condition of job requirements and such approval shall authorize release to fabrication.</p> <p>4) Fremara shall not be responsible for any errors and/or work that occurs from the use of these drawings by other trades.</p>			



H D03 SLAB ANCHOR

PROJECT:		US7375 STRUTTED UNITIZED	
LOCATION:			
ARCHITECT:			
CONTRACTOR:			
DRAWN BY:		TAF	
DATE:		10/16/23	
NO.		DATE	
BY		REVISIONS	
<p><b>GENERAL NOTES:</b></p> <p>1) Contractor to verify all dimensions in the field. All framing will be manufactured to the dimensions indicated unless otherwise noted.</p> <p>2) Architect to verify all conditions for compliance to contract documents and, if required, provide correct details and/or dimensions to ensure proper coordination.</p> <p>3) Drawings marked "approved" or "approved as noted" shall be interpreted as an accurate condition of job requirements and such approval shall authorize release to fabrication.</p> <p>4) Fremaraq shall not be responsible for any errors and/or work that occurs from the use of these drawings by other trades.</p>			

**Fremaraq**  
**INNOVATIONS**  
 1101 NORTH MILL STREET  
 MERRILL, WISCONSIN 54452  
 WWW.FREMARQINNOVATIONS.COM

JOB NUMBER

SHEET TITLE  
**DETAIL SHEET**

DRAWING SCALE  
 11x17 = 6" = 1'-0"  
 22x34 = 12" = 1'-0"

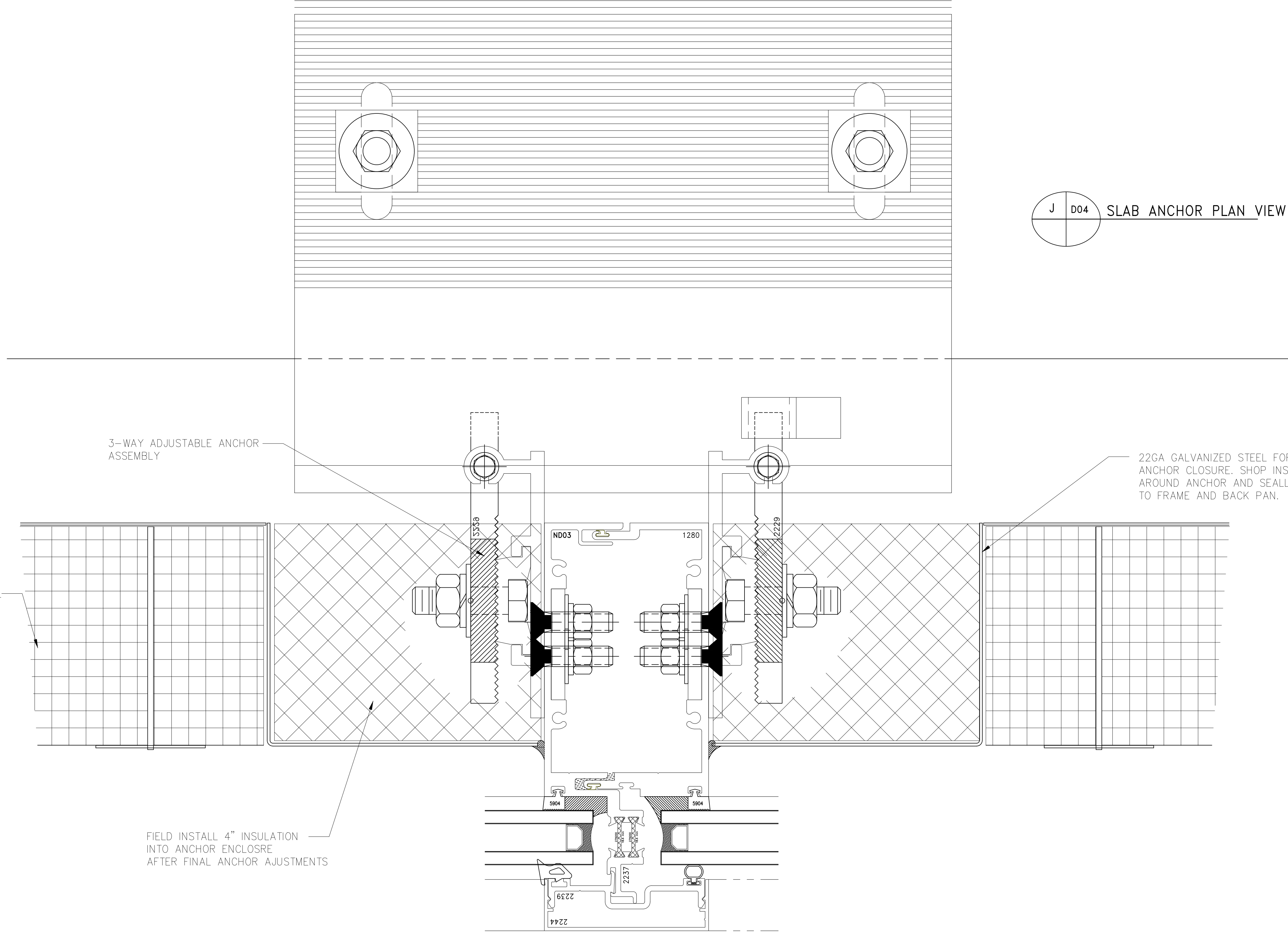
DRAWING NO.  
**D03**

4" MINERAL WOOL INSULATION

3-WAY ADJUSTABLE ANCHOR ASSEMBLY

FIELD INSTALL 4" INSULATION INTO ANCHOR ENCLOSRE AFTER FINAL ANCHOR AJUSTMENTS

22GA GALVANIZED STEEL FORMED ANCHOR CLOSURE. SHOP INSTALLED AROUND ANCHOR AND SEALED TO FRAME AND BACK PAN.



J D04 SLAB ANCHOR PLAN VIEW

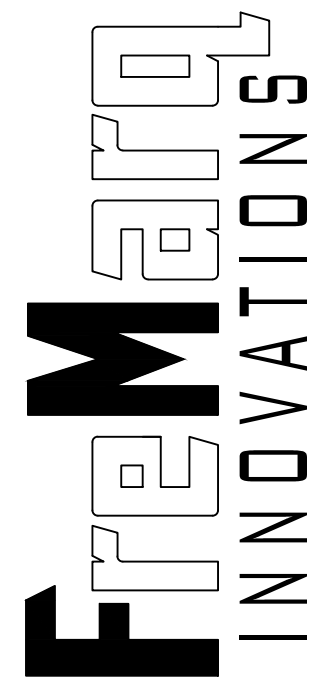
PROJECT:

US7375 STRUTTED UNITIZED

LOCATION:

ARCHITECT:

CONTRACTOR:



1101 NORTH MILL STREET  
MERRILL, WISCONSIN 54452  
WWW.FREMARAINNOVATIONS.COM

JOB NUMBER

SHEET TITLE  
DETAIL SHEET

DRAWING SCALE  
11x17 = 6" = 1'-0"  
22x34 = 12" = 1'-0"

DRAWING NO.  
D04

DRAWN BY: TAF

DATE: 10/16/23

GENERAL NOTES:

- 1) Contractor to verify all dimensions in the field. All framing will be manufactured to the dimensions indicated unless otherwise noted.
- 2) Architect to review all conditions for compliance to contract documents and, if required, provide correct details and/or dimensions to ensure proper coordination.
- 3) Drawings marked "approved" or "approved as noted" shall be interpreted as an accurate condition of job requirements and such approval shall authorize release to fabrication.
- 4) Fremara shall not be responsible for any errors and/or work that occurs from the use of these drawings by other trades.

NO.

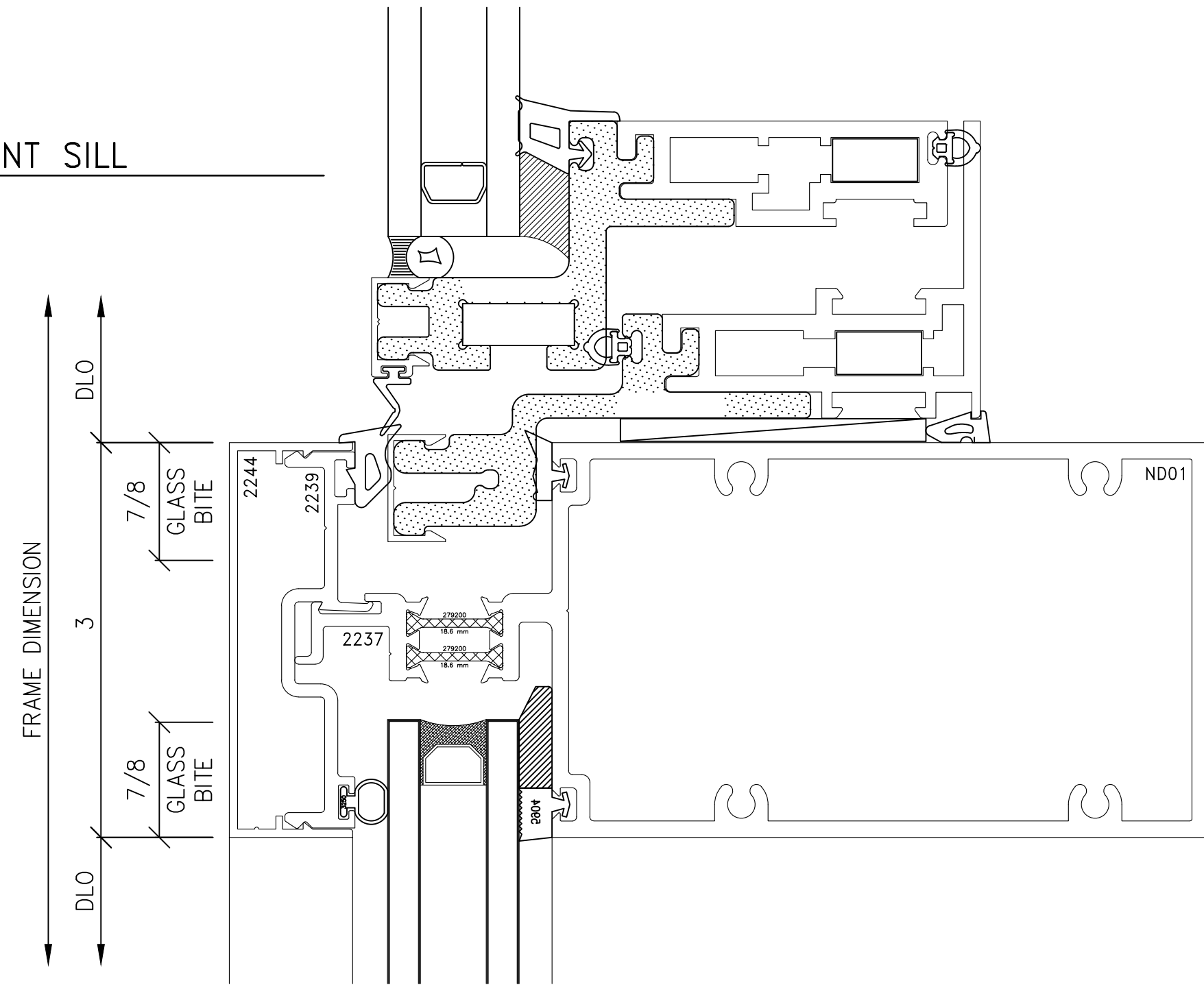
DATE

BY

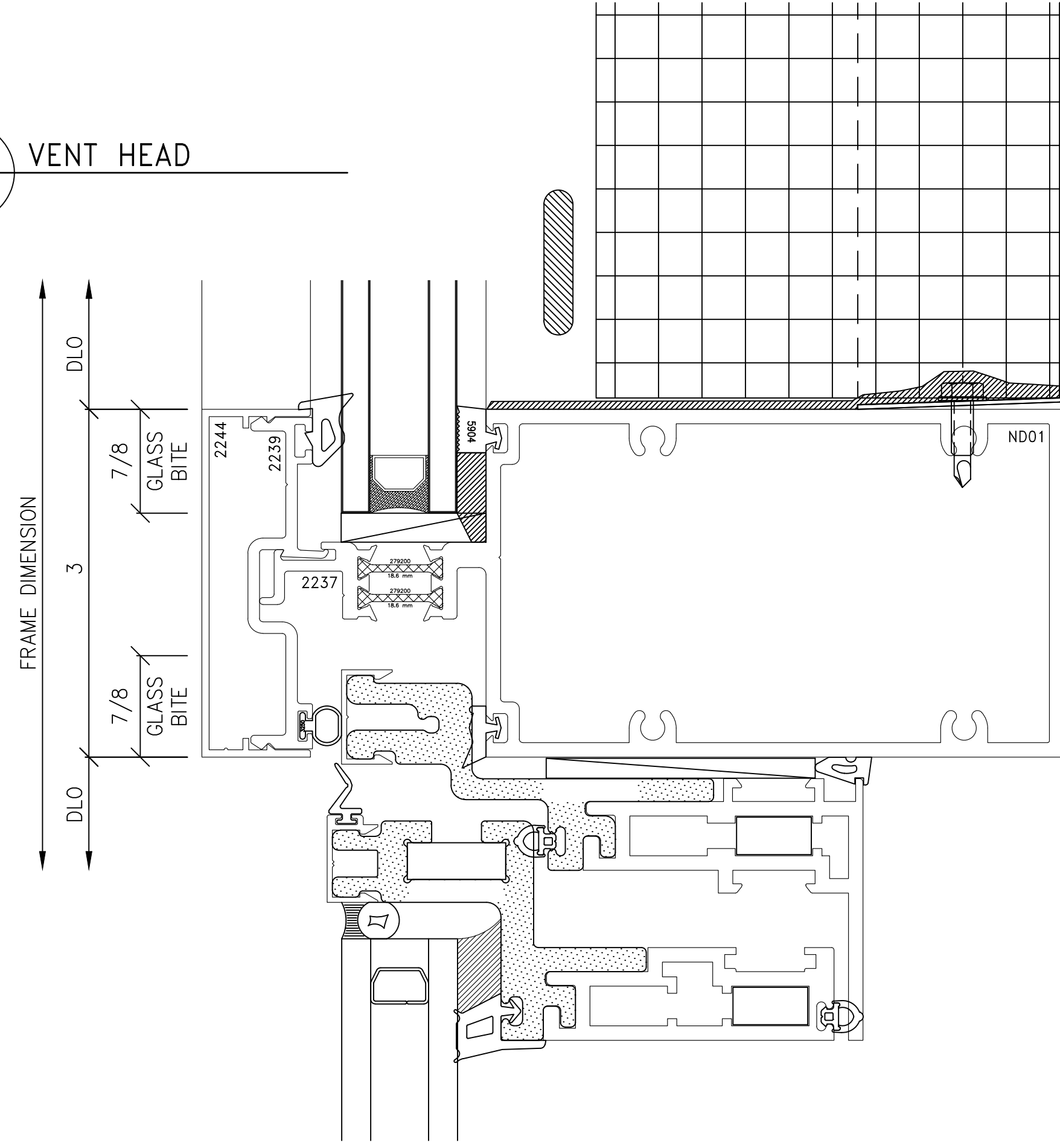
REVISIONS



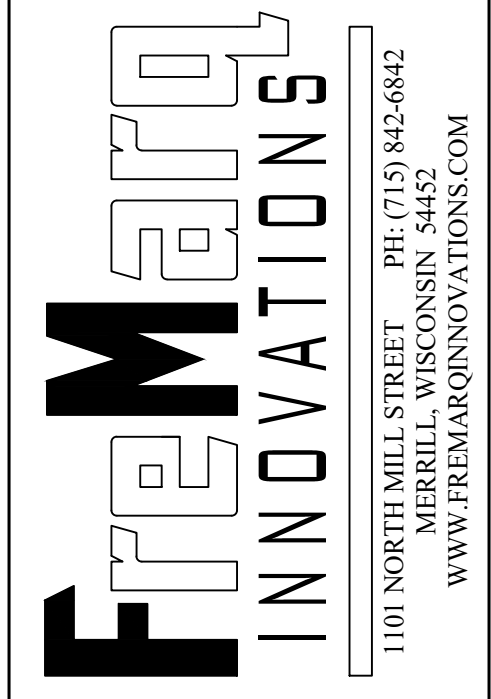
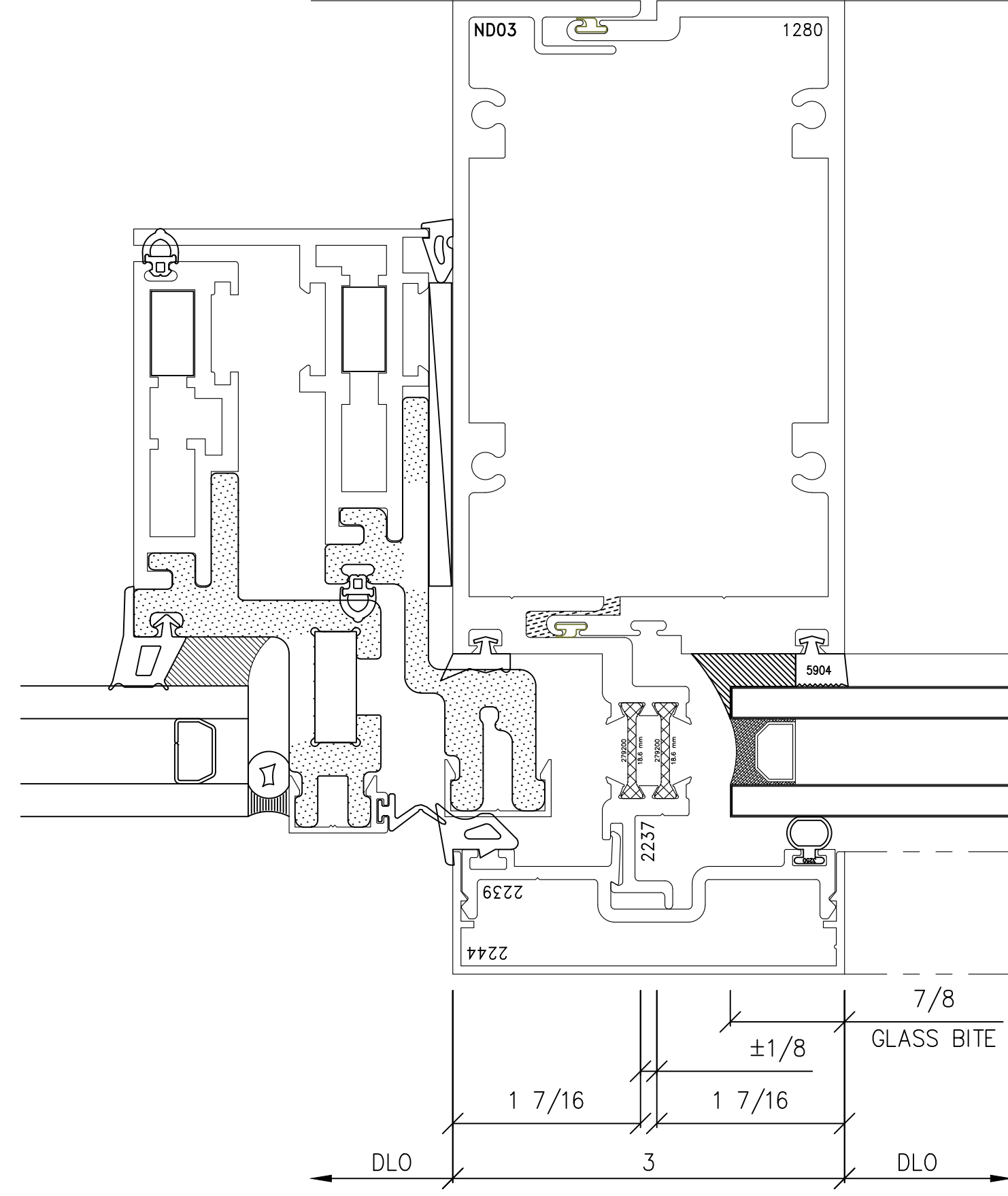
L D05 VENT SILL



K D05 VENT HEAD



M D05 VENT JAMB



JOB NUMBER  
 SHEET TITLE  
**DETAIL SHEET**  
 DRAWING SCALE  
 11x17 = 6" = 1'-0"  
 22x34 = 12" = 1'-0"  
 DRAWING NO.  
**D05**

PROJECT:  
**US7375 STRUTTED UNITIZED**  
 LOCATION:  
 ARCHITECT:  
 CONTRACTOR:

DRAWN BY: TAF	NO.	DATE	BY
DATE: 10/16/23			
GENERAL NOTES: 1) Contractor to verify all dimensions in the field. All framing will be manufactured to the dimensions indicated unless otherwise noted. 2) Architect to review all conditions for compliance to contract documents and, if required, provide correct details and/or dimensions to ensure proper coordination. 3) Drawings marked 'approved' or 'approved as noted' shall be interpreted as an accurate condition of job requirements and such approval shall authorize release to fabrication. 4) Fremara shall not be responsible for any errors and/or work that occurs from the use of these drawings by other trades.			
REVISIONS			