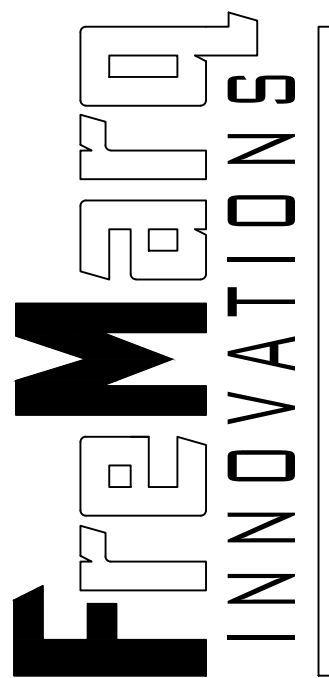
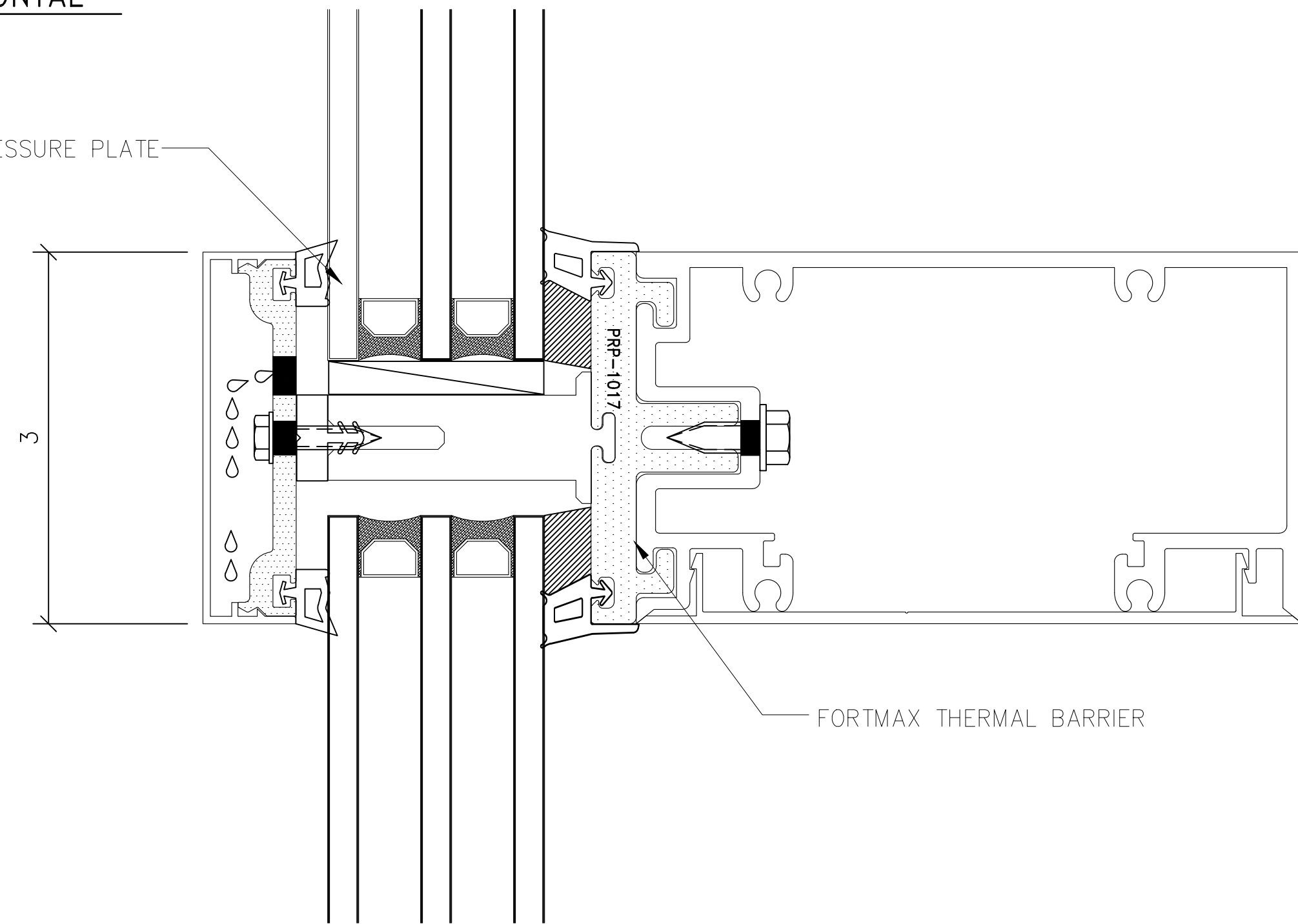


PROJECT: UCW3500 CAPTURED CW W/ TRIPLE		DRAWN BY: TAS		NO.		DATE		BY		REVISIONS					
LOCATION: 		DATE: 10/16/23		NO.		DATE		BY		REVISIONS					
GENERAL NOTES: 1) Contractor to verify all dimensions in the field. All framing will be manufactured to the dimensions indicated unless otherwise noted. 2) Architect to review all conditions for compliance to contract documents and, if required, provide correct details and/or dimensions to ensure proper coordination. 3) Drawings marked "approved" or "approved as noted" shall be interpreted as an accurate condition of job requirements and such approval shall authorize release to fabrication. 4) Fremaraq shall not be responsible for any errors and/or work that occurs from the use of these drawings by other trades.															
PROJECT: UCW3500 CAPTURED CW W/ TRIPLE				LOCATION:				ARCHITECT:				CONTRACTOR:			
															
1101 NORTH MILL STREET PE: (715) 842-6842 MERRILL, WISCONSIN 54452 WWW.FREMARQINNOVATIONS.COM															
JOB NUMBER															
SHEET TITLE ELEVATION SHEET															
DRAWING SCALE 11x17 = 6" = 1'-0" 22x34 = 12" = 1'-0"															
DRAWING NO. E01															

A D01 VISION HORIZONTAL

FORTMAX PRESSURE PLATE



FORTMAX THERMAL BARRIER

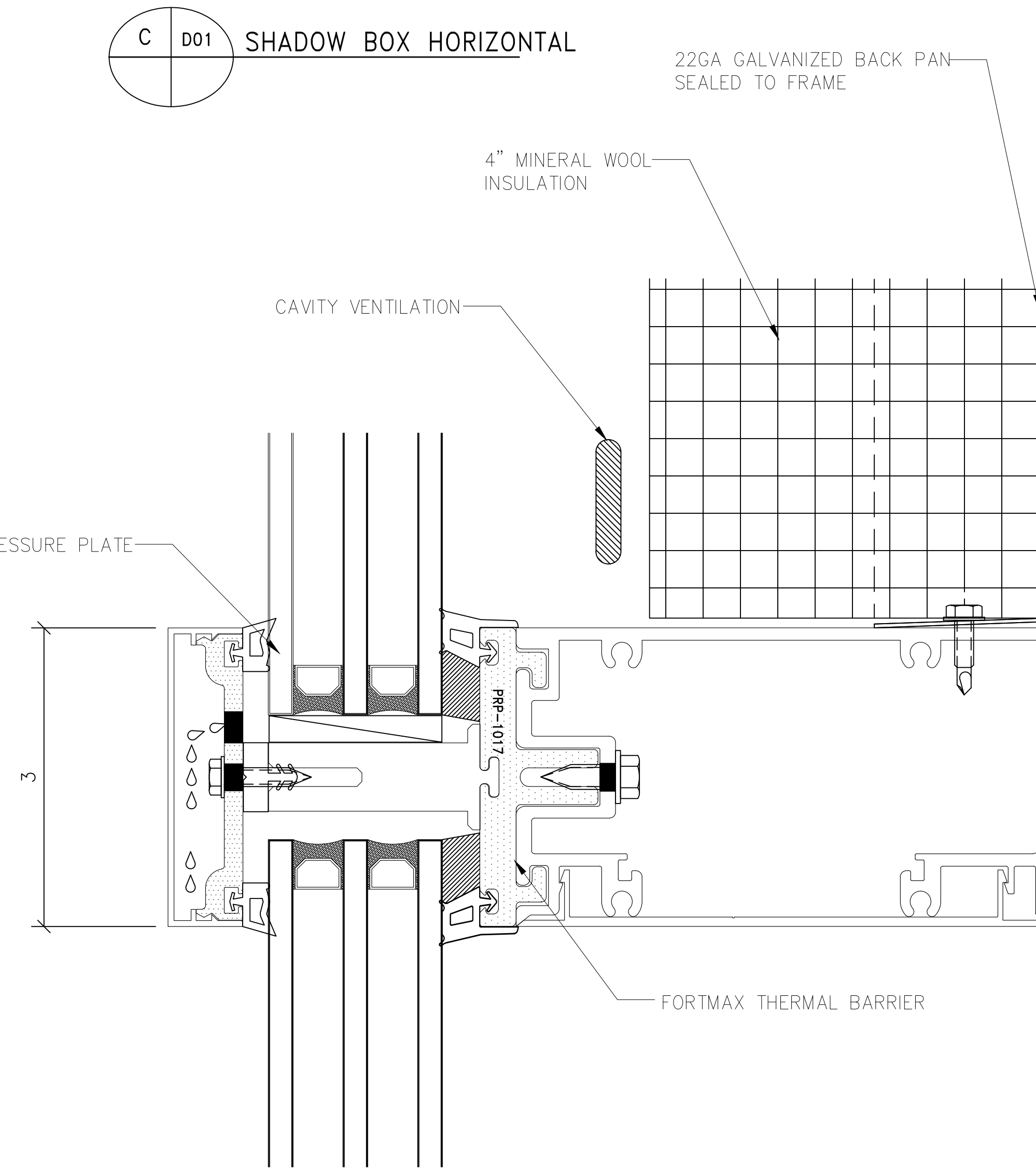
C D01 SHADOW BOX HORIZONTAL

22GA GALVANIZED BACK PAN SEALED TO FRAME

4" MINERAL WOOL INSULATION

CAVITY VENTILATION

FORTMAX PRESSURE PLATE

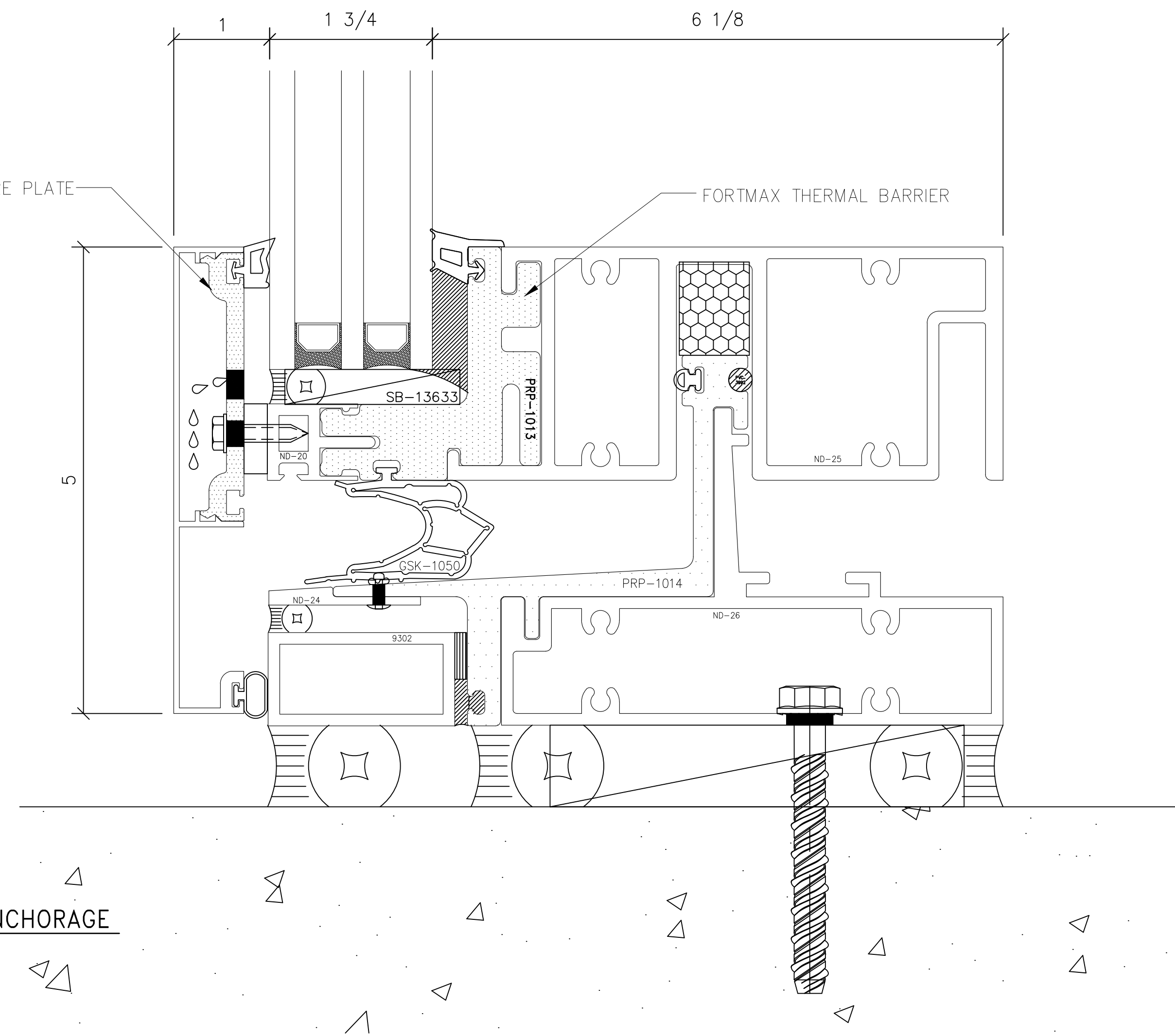


FORTMAX THERMAL BARRIER

B D01 STARTER ANCHORAGE

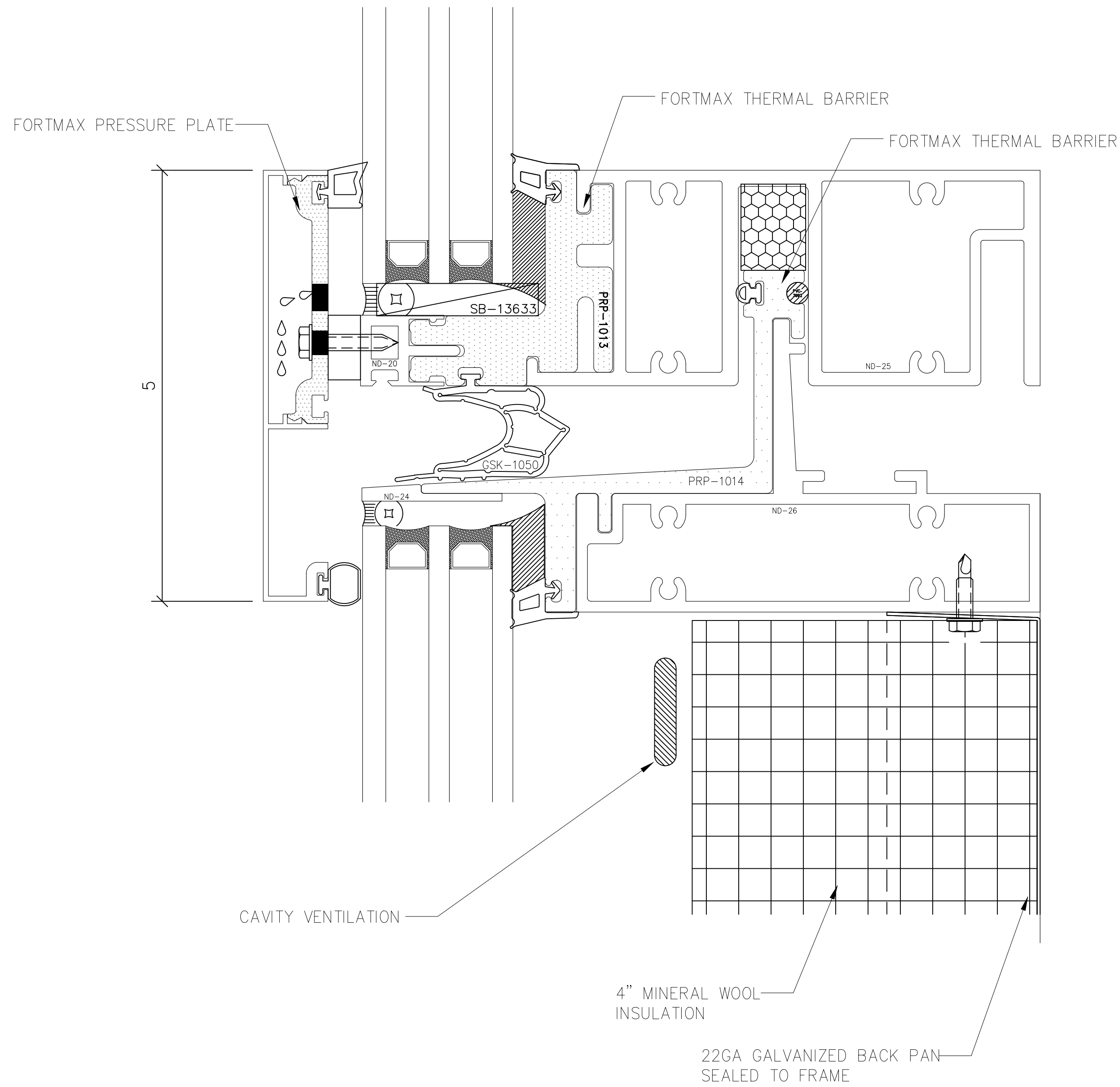
FORTMAX PRESSURE PLATE

FORTMAX THERMAL BARRIER

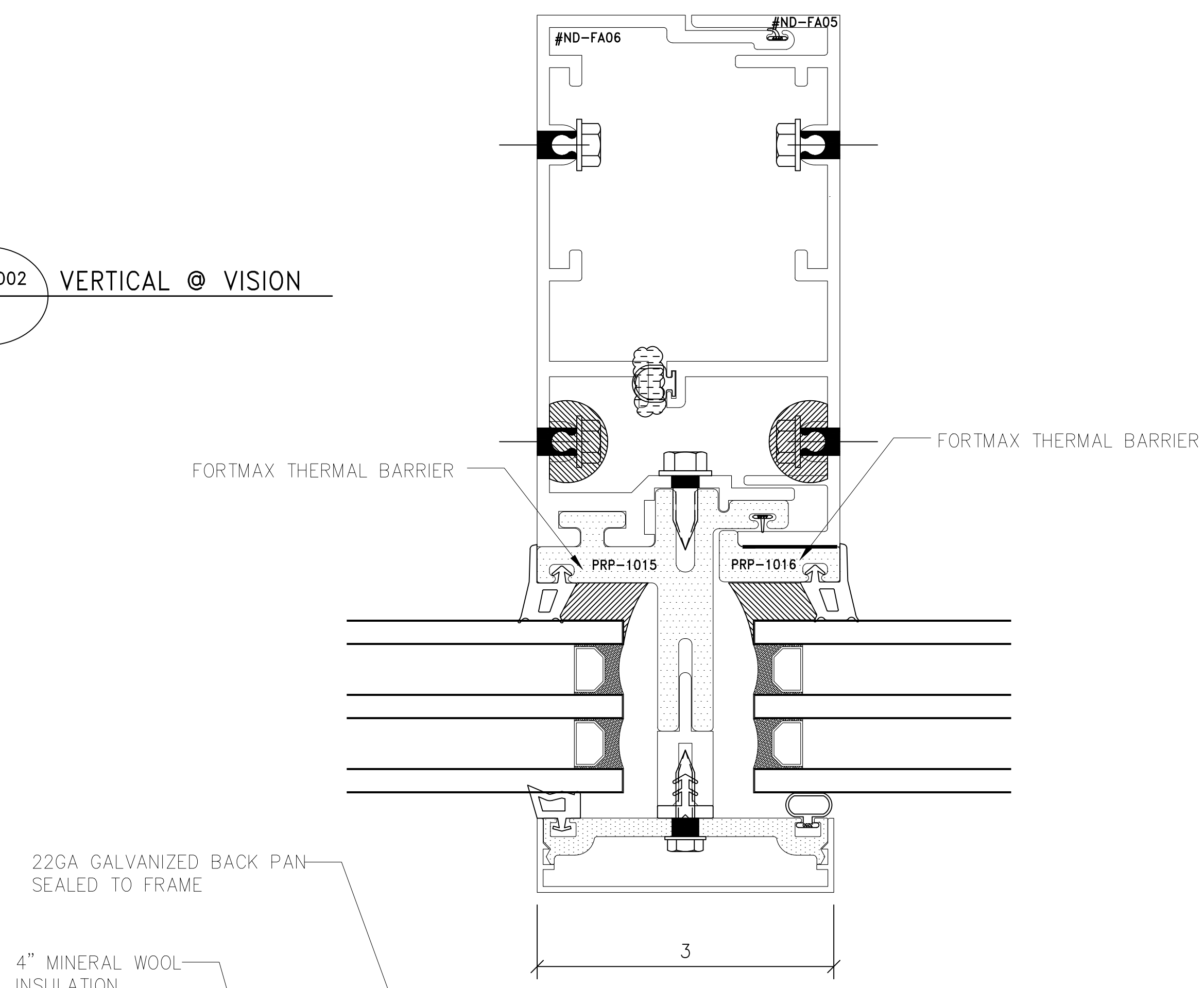


PROJECT:		UCW3500 CAPTURED CW W/ TRIPLE	
LOCATION:			
ARCHITECT:			
CONTRACTOR:			
DRAWN BY: TAF		DATE: 10/16/23	
NO.		REVISIONS	
BY		DATE	
<p>GENERAL NOTES:</p> <p>1) Contractor to verify all dimensions in the field. All framing will be manufactured to the dimensions indicated unless otherwise noted.</p> <p>2) Architect to review all conditions for compliance to contract documents and, if required, provide correct details and/or dimensions to ensure proper coordination.</p> <p>3) Drawings marked "approved" or "approved as noted" shall be interpreted as an accurate condition of job requirements and such approval shall authorize release to fabrication.</p> <p>4) Fremara shall not be responsible for any errors and/or work that occurs from the use of these drawings by other trades.</p>			
<p>Fremara INNOVATIONS</p> <p>1101 NORTH MILL STREET MERRILL, WISCONSIN 54452 WWW.FREMARAINNOVATIONS.COM</p>		<p>PH: (715) 842-6842</p>	
JOB NUMBER			
SHEET TITLE		DETAIL SHEET	
DRAWING SCALE		11x17 = 6" = 1'-0"	
		22x34 = 12" = 1'-0"	
DRAWING NO.		D01	

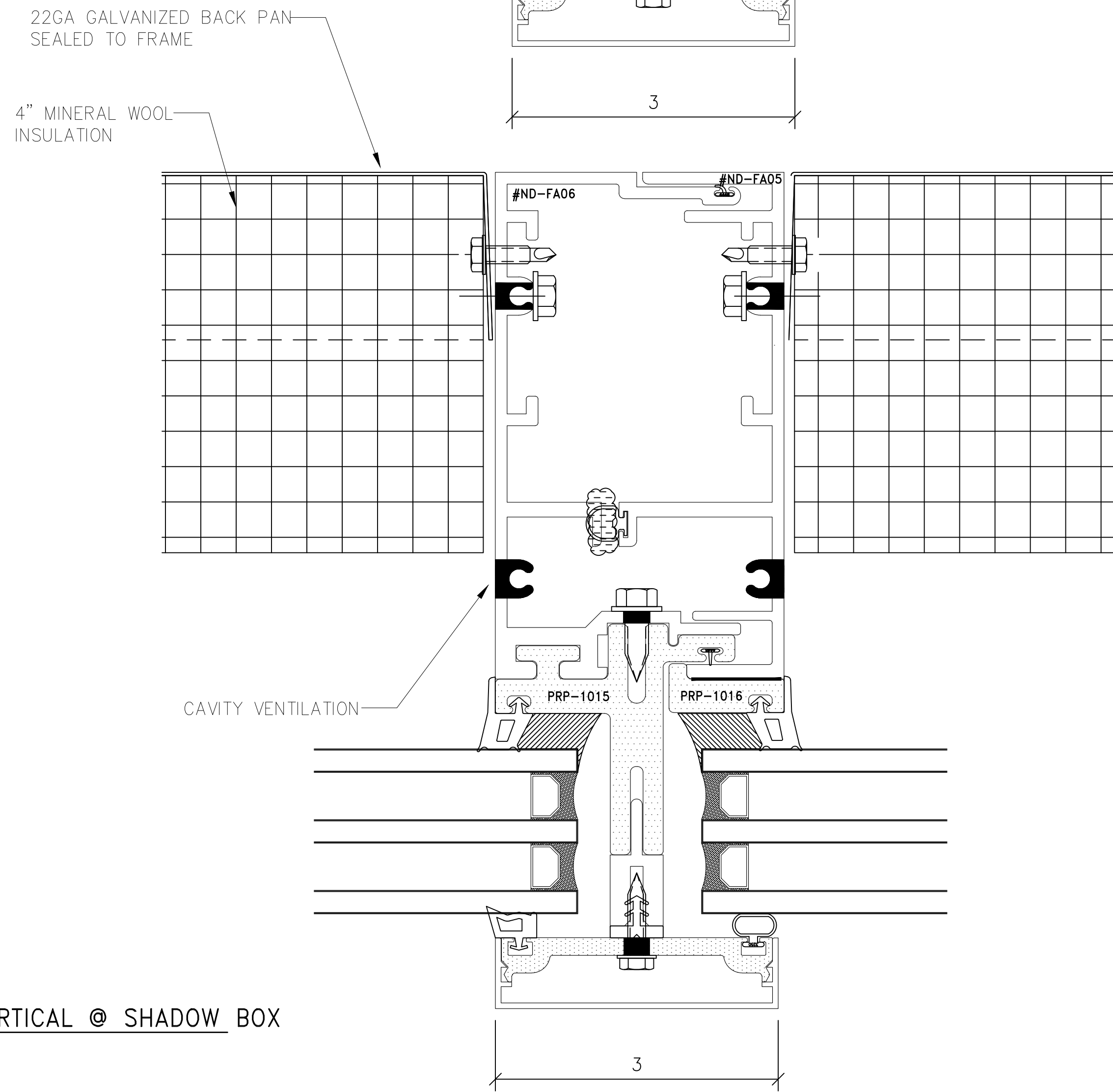
D D02 HORIZONTAL STACK



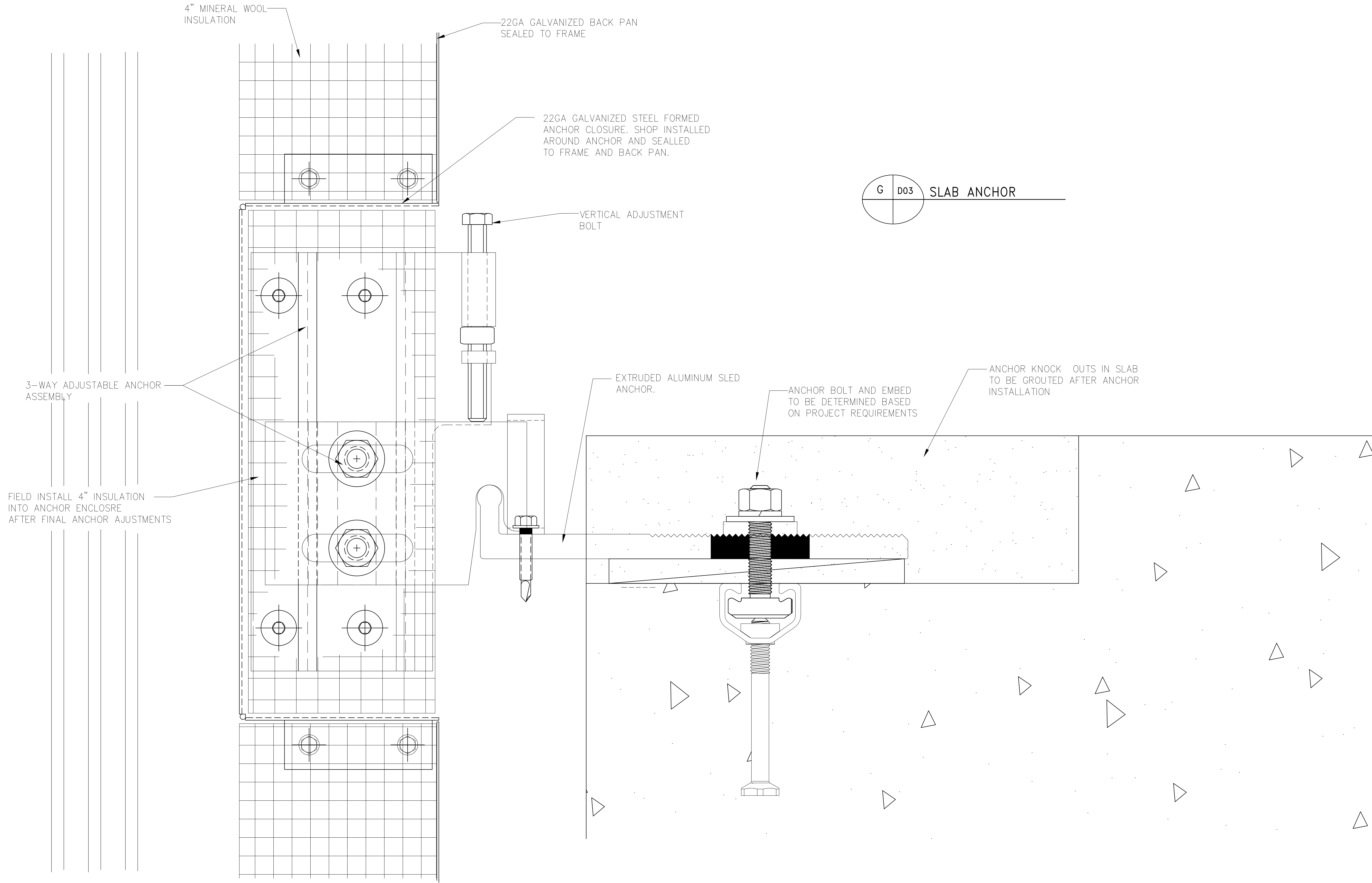
E D02 VERTICAL @ VISION



F D02 VERTICAL @ SHADOW BOX



PROJECT:		UCW3500 CAPTURED CW W/ TRIPLE	
LOCATION:			
ARCHITECT:			
CONTRACTOR:			
DRAWN BY:		TAF	
DATE:		10/16/23	
GENERAL NOTES:		1) Contractor to verify all dimensions in the field. All framing will be manufactured to the dimensions indicated unless otherwise noted. 2) Architect to review all conditions for compliance to contract documents and, if required, provide correct details and/or dimensions to ensure proper coordination. 3) Drawings marked "approved" or "approval as noted" shall be interpreted as an accurate condition of job requirements and such approval shall authorize release to fabrication. 4) Fremara shall not be responsible for any errors and/or work that occurs from the use of these drawings by other trades.	
NO.	DATE	BY	REVISIONS
JOB NUMBER			
SHEET TITLE		DETAIL SHEET	
DRAWING SCALE		11x17 = 6" = 1'-0" 22x34 = 12" = 1'-0"	
DRAWING NO.		D02	



PROJECT:		UCW3500 CAPTURED CW W/ TRIPLE	
LOCATION:			
ARCHITECT:			
CONTRACTOR:			
DRAWN BY:		TAF	
DATE:		10/16/23	
NO.		DATE	
BY		REVISIONS	
<p>GENERAL NOTES:</p> <p>1) Contractor to verify all dimensions in the field. All framing will be manufactured to the dimensions indicated unless otherwise noted.</p> <p>2) Architect to verify all conditions for compliance to contract documents and, if required, provide correct details and/or dimensions to ensure proper coordination.</p> <p>3) Drawings marked "approved" or "approved as noted" shall be interpreted as an accurate condition of job requirements and such approval shall authorize release to fabrication.</p> <p>4) Fremaraq shall not be responsible for any errors and/or work that occurs from the use of these drawings by other trades.</p>			

Fremaraq
INNOVATIONS

1101 NORTH MILL STREET
MERRILL, WISCONSIN 54452
WWW.FREMARQINNOVATIONS.COM

JOB NUMBER

SHEET TITLE
DETAIL SHEET

DRAWING SCALE
11x17 = 6" = 1'-0"
22x34 = 12" = 1'-0"

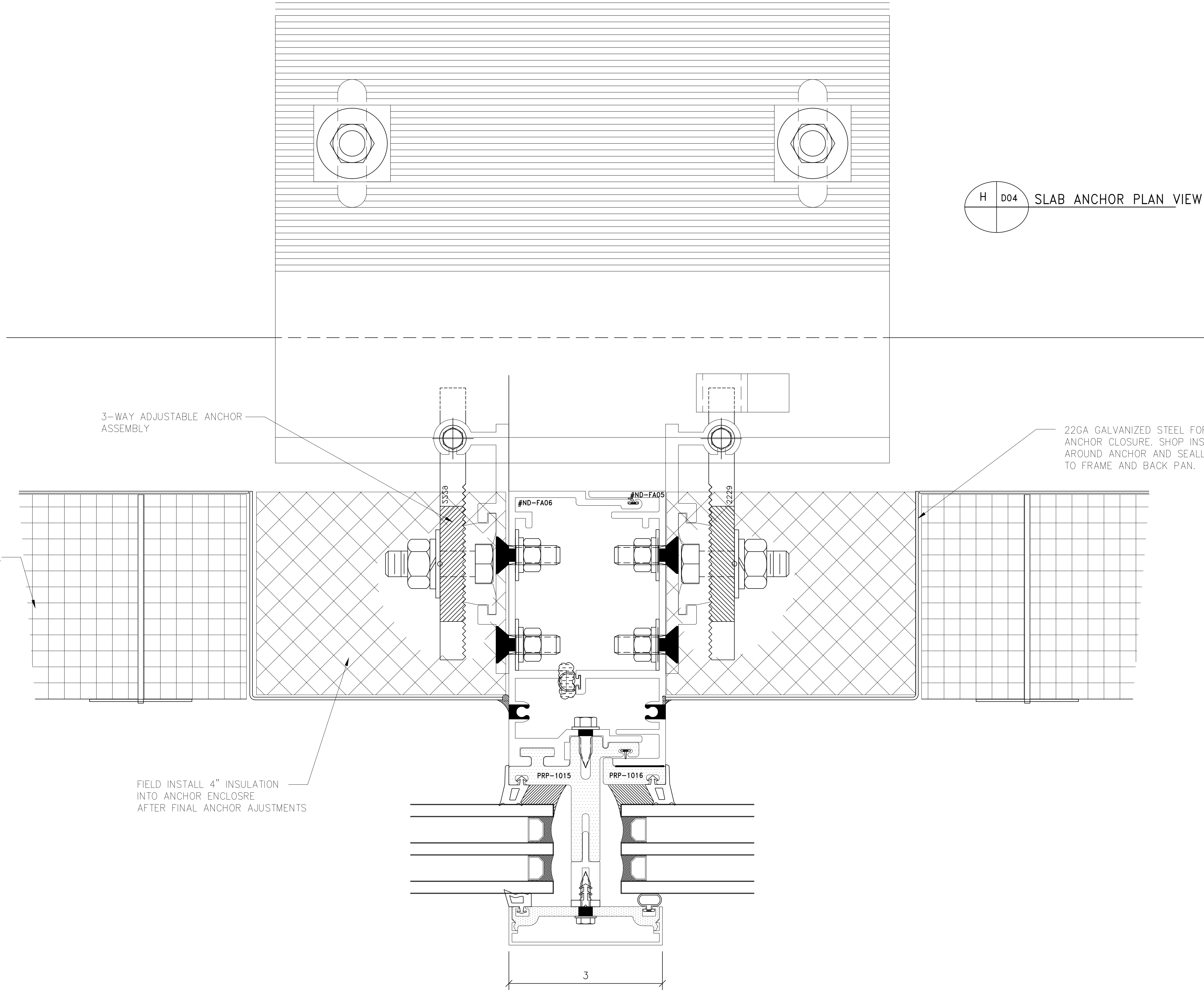
DRAWING NO.
D03

4" MINERAL WOOL INSULATION

3-WAY ADJUSTABLE ANCHOR ASSEMBLY

FIELD INSTALL 4" INSULATION INTO ANCHOR ENCLOSURE AFTER FINAL ANCHOR ADJUSTMENTS

22GA GALVANIZED STEEL FORMED ANCHOR CLOSURE. SHOP INSTALLED AROUND ANCHOR AND SEALED TO FRAME AND BACK PAN.



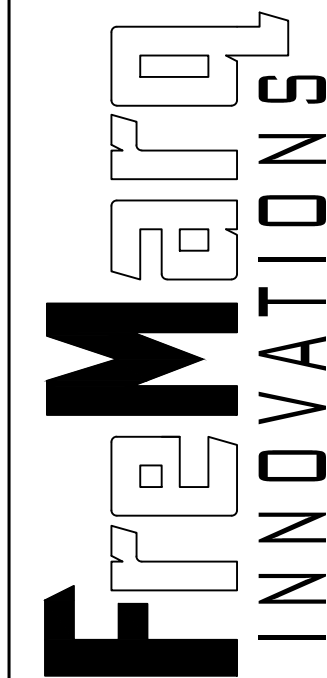
H D04 SLAB ANCHOR PLAN VIEW

PROJECT:
UCW3500 CAPTURED CW W/ TRIPLE

LOCATION:

ARCHITECT:

CONTRACTOR:



1101 NORTH MILL STREET
MERRILL, WISCONSIN 54452
WWW.FREMARAINNOVATIONS.COM

JOB NUMBER

SHEET TITLE
DETAIL SHEET

DRAWING SCALE
11x17 = 6" = 1'-0"
22x34 = 12" = 1'-0"

DRAWING NO.
D04

DRAWN BY: TAF

DATE: 10/16/23

NO.

DATE

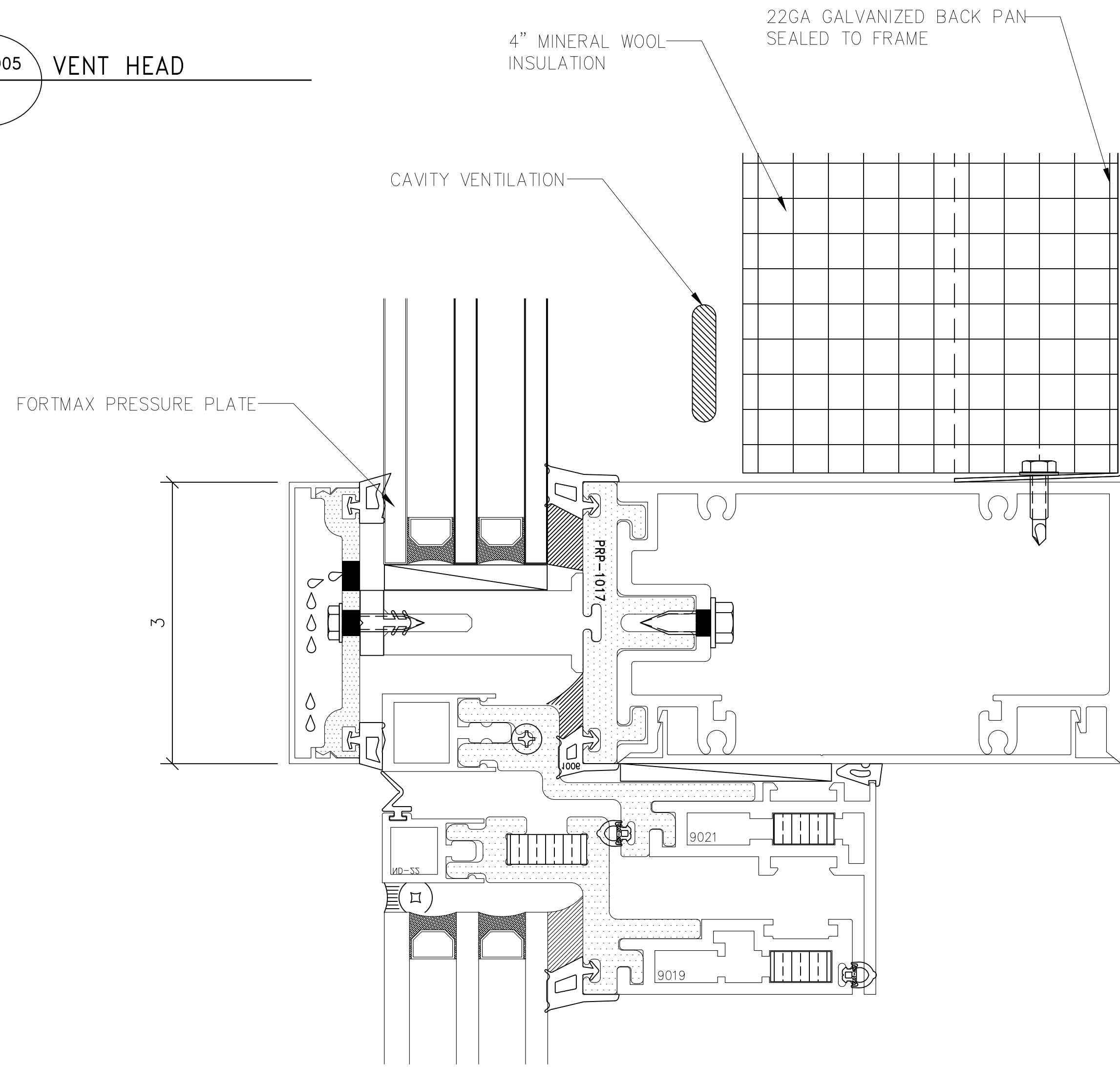
BY

REVISIONS

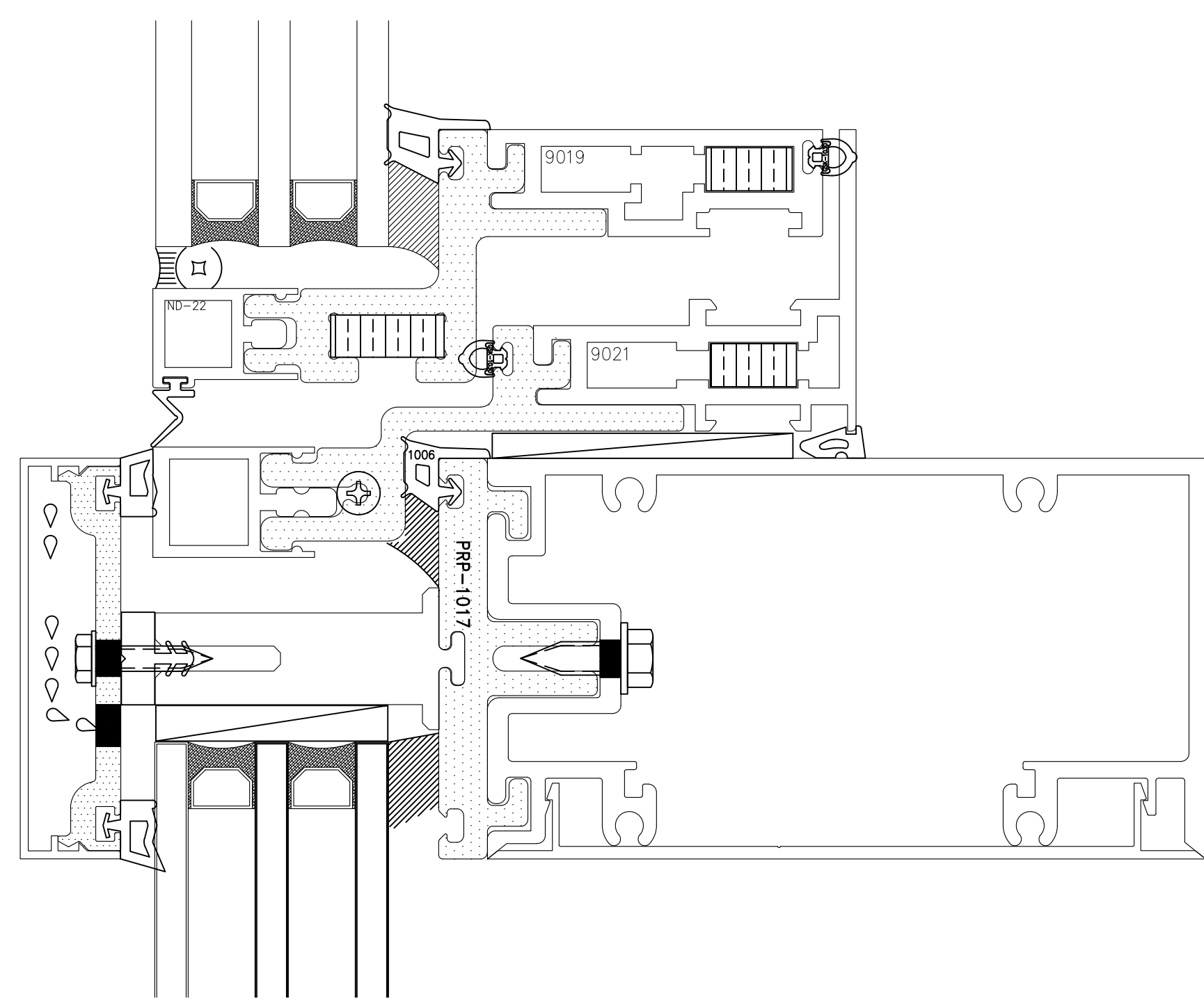
GENERAL NOTES:

- 1) Contractor to verify all dimensions in the field. All framing will be manufactured to the dimensions indicated unless otherwise noted.
- 2) Architect to review all conditions for compliance to contract documents and, if required, provide correct details and/or dimensions to ensure proper coordination.
- 3) Drawings marked "approved" or "approved as noted" shall be interpreted as an accurate condition of job requirements and such approval shall authorize release to fabrication.
- 4) Fremara shall not be responsible for any errors and/or work that occurs from the use of these drawings by other trades.

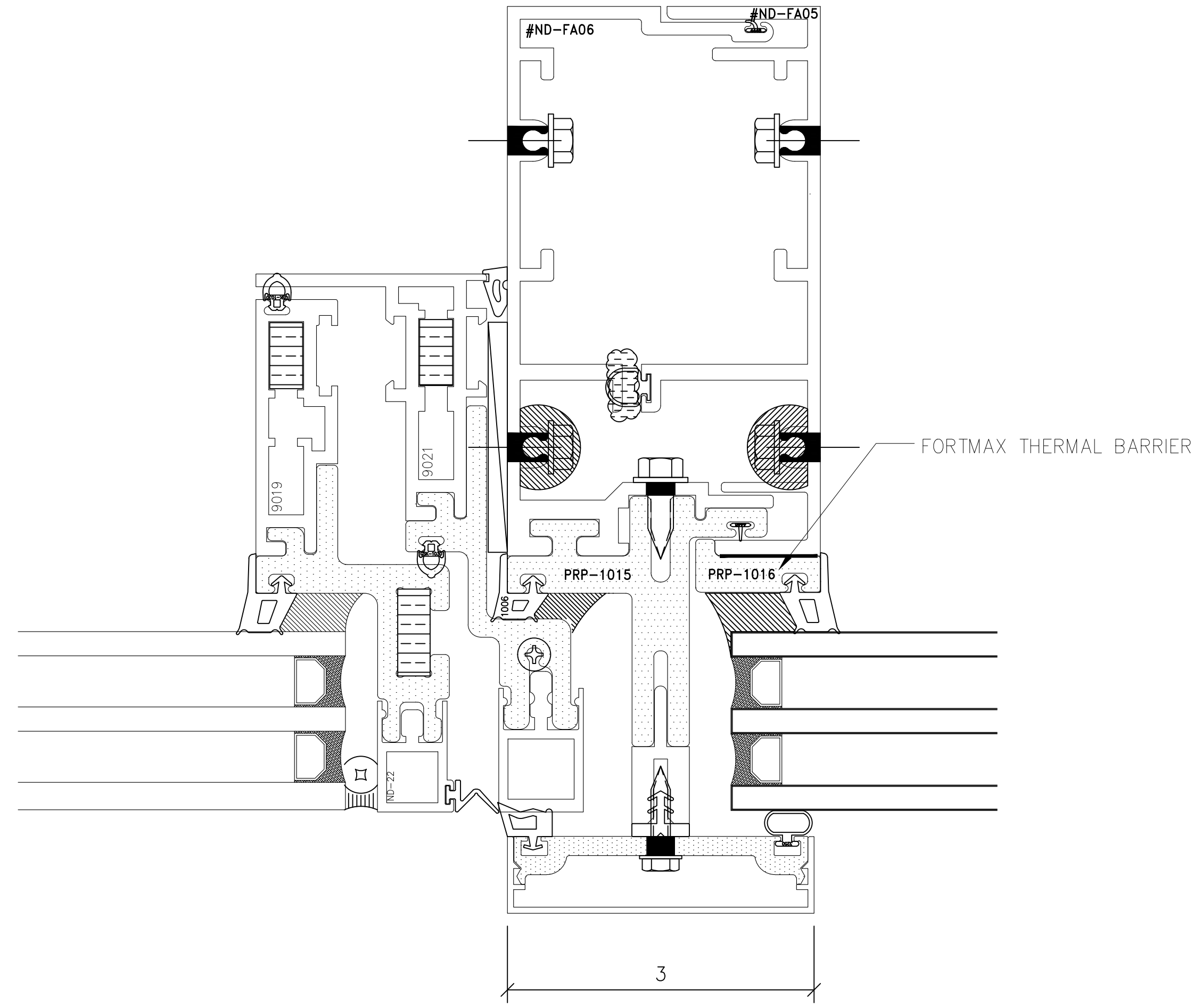
J D05 VENT HEAD



K D05 VENT SILL



L D05 VENT JAMB



PROJECT:		UCW3500 CAPTURED CW W/ TRIPLE	
LOCATION:			
ARCHITECT:			
CONTRACTOR:			
DRAWN BY:		TAF	
DATE:		10/16/23	
NO.		DATE	
BY		REVISIONS	
<p>GENERAL NOTES:</p> <p>1) Contractor to verify all dimensions in the field. All framing will be manufactured to the dimensions indicated unless otherwise noted.</p> <p>2) Architect to review all conditions for compliance to contract documents and, if required, provide correct details and/or dimensions to ensure proper coordination.</p> <p>3) Drawings marked 'approved' or 'approved as noted' shall be interpreted as an accurate condition of job requirements and such approval shall authorize release to fabrication.</p> <p>4) FreeMarq shall not be responsible for any errors and/or work that occurs from the use of these drawings by other trades.</p>			
JOB NUMBER			
SHEET TITLE		DETAIL SHEET	
DRAWING SCALE		11x17 = 6"= 1'-0"	
		22x34 = 12"= 1'-0"	
DRAWING NO.		D05	