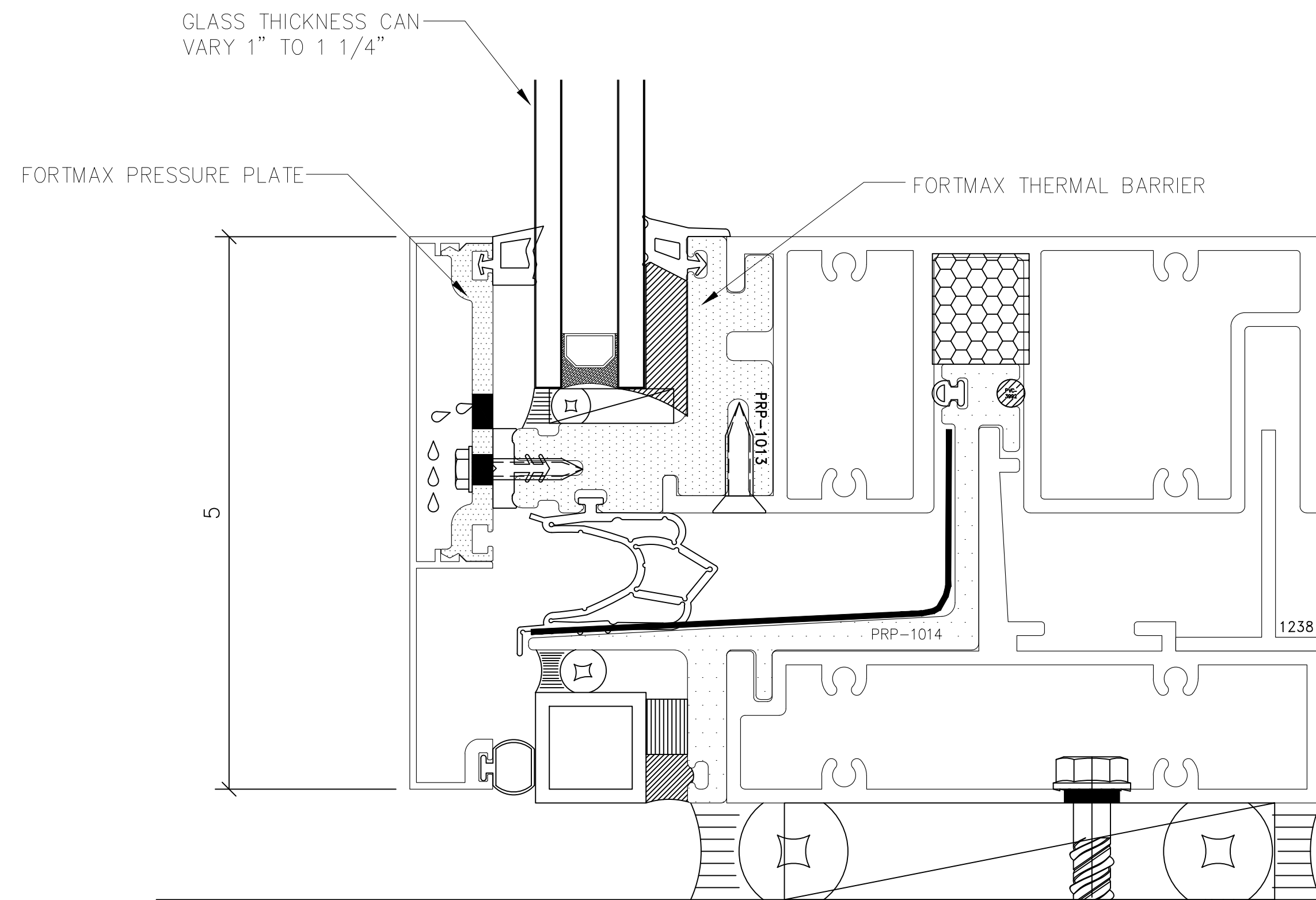


PROJECT: UCW3500 CAPTURED CW W/ IGU		DRAWN BY: TAS		NO.		DATE		BY		REVISIONS	
LOCATION:		DATE: 10/16/23		NO.		DATE		BY		REVISIONS	
ARCHITECT:		GENERAL NOTES: 1) Contractor to verify all dimensions in the field. All framing will be manufactured to the dimensions indicated unless otherwise noted. 2) Architect to review all conditions for compliance to contract documents and, if required, provide correct details and/or dimensions to ensure proper coordination. 3) Drawings marked "approved" or "approved as noted" shall be interpreted as an accurate condition of job requirements and such approval shall authorize release to fabrication. 4) Fremaraq shall not be responsible for any errors and/or work that occurs from the use of these drawings by other trades.									
CONTRACTOR:		PROJECT: UCW3500 CAPTURED CW W/ IGU									
CONTRACTOR:		LOCATION:									
CONTRACTOR:		ARCHITECT:									
CONTRACTOR:		CONTRACTOR:									

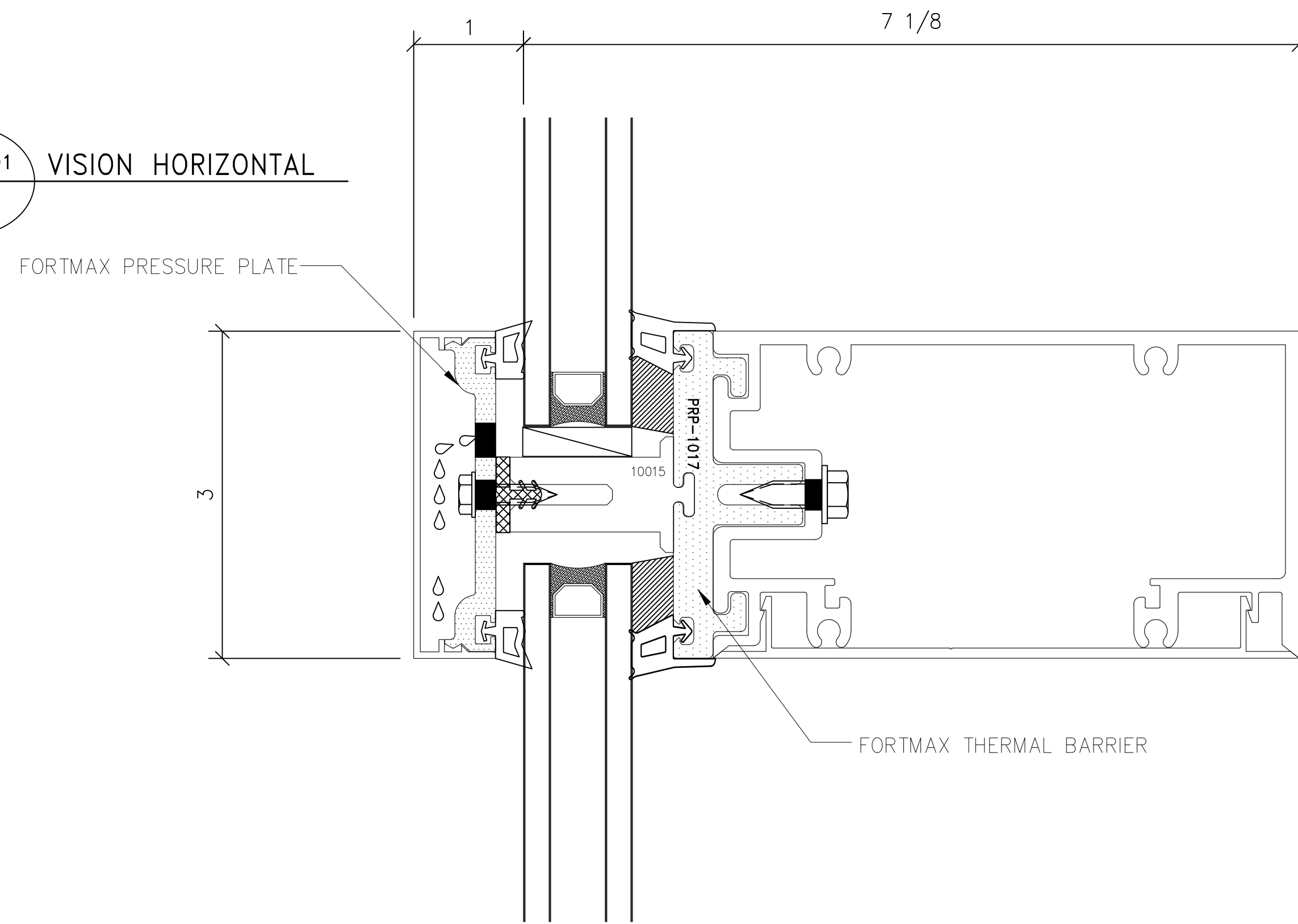
Fremaraq
INNOVATIONS
 1101 NORTH MILL STREET PH: (715) 842-6842
 MERRILL, WISCONSIN 54452
 WWW.FREMARQINNOVATIONS.COM

JOB NUMBER
 SHEET TITLE
ELEVATION SHEET
 DRAWING SCALE
 11x17 = 6" = 1'-0"
 22x34 = 12" = 1'-0"
 DRAWING NO.
E01

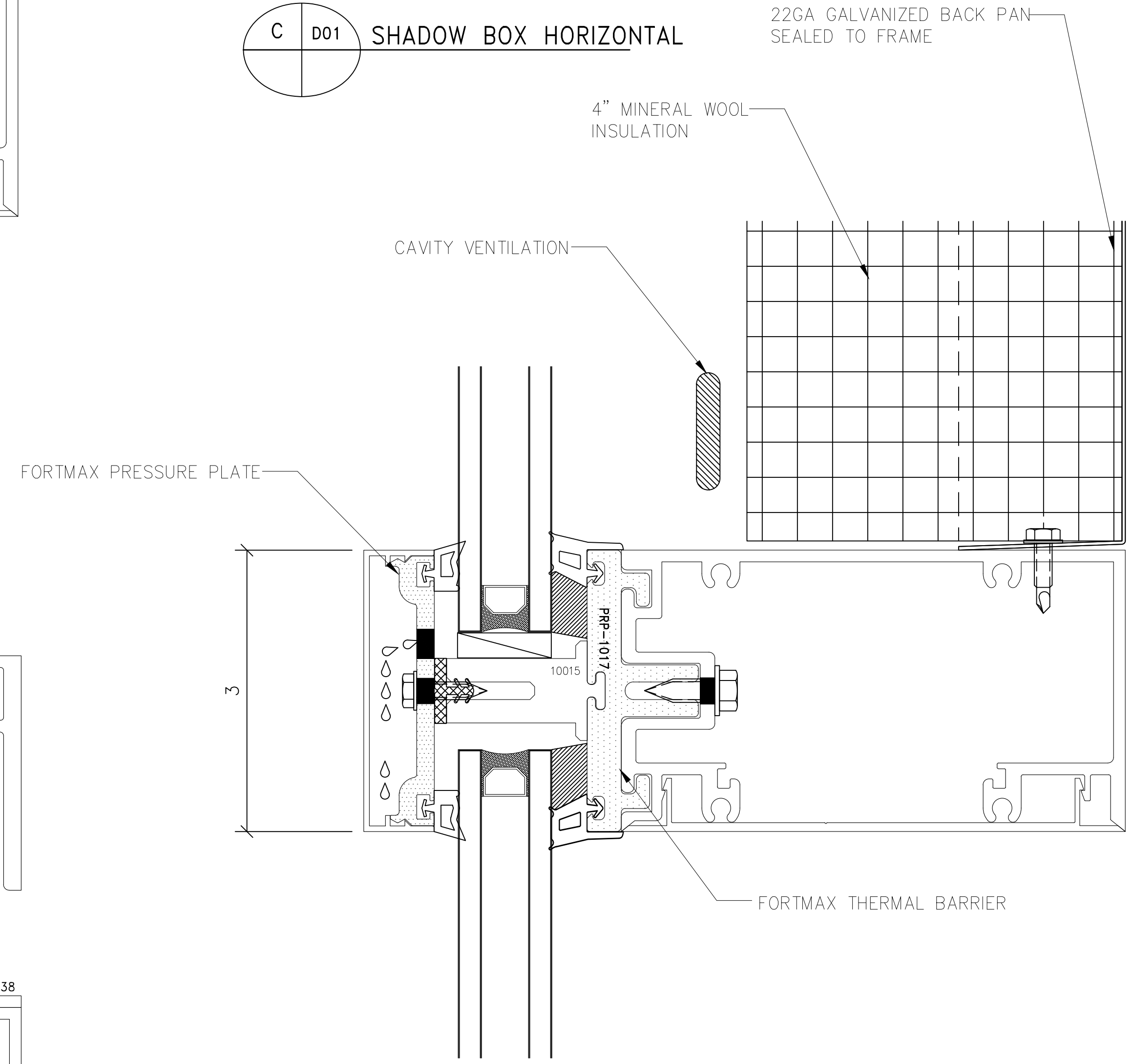
B D01 STARTER ANCHORAGE



A D01 VISION HORIZONTAL

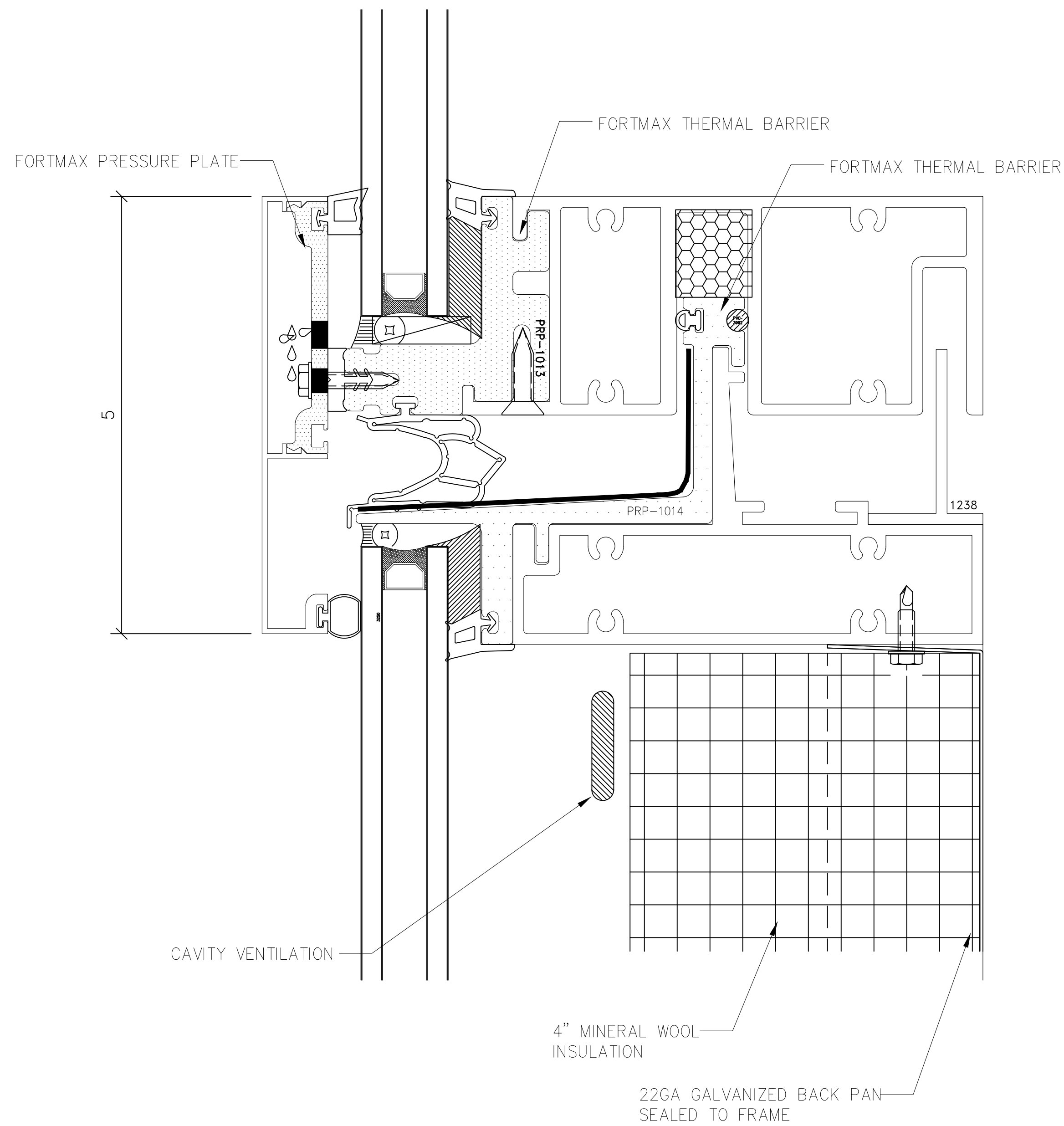


C D01 SHADOW BOX HORIZONTAL

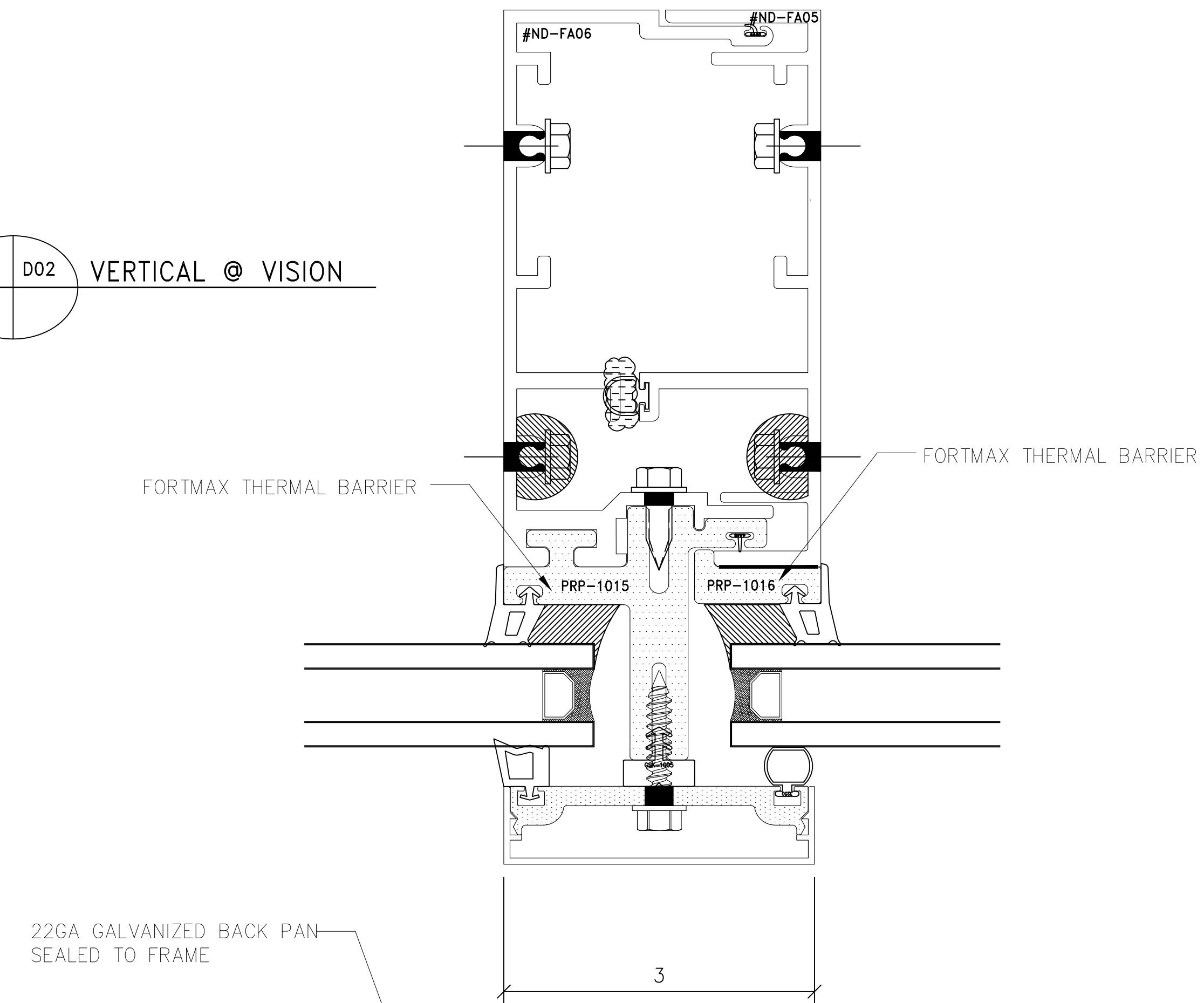


PROJECT:		UCW3500 CAPTURED CW W/ 1" IGU	
LOCATION:			
ARCHITECT:			
CONTRACTOR:			
DRAWN BY:		TAF	
DATE:		10/16/23	
NO.			
DATE			
BY			
REVISIONS			
<p>GENERAL NOTES:</p> <p>1) Contractor to verify all dimensions in the field. All framing will be manufactured to the dimensions indicated unless otherwise noted.</p> <p>2) Architect to review all conditions for compliance to contract documents and, if required, provide correct details and/or dimensions to ensure proper coordination.</p> <p>3) Drawings marked "approved" or "approved as noted" shall be interpreted as an accurate condition of job requirements and such approval shall authorize release to fabrication.</p> <p>4) Fremarq shall not be responsible for any errors and/or work that occurs from the use of these drawings by other trades.</p>			
JOB NUMBER			
SHEET TITLE		DETAIL SHEET	
DRAWING SCALE		11x17 = 6" = 1'-0"	
		22x34 = 12" = 1'-0"	
DRAWING NO.		D01	

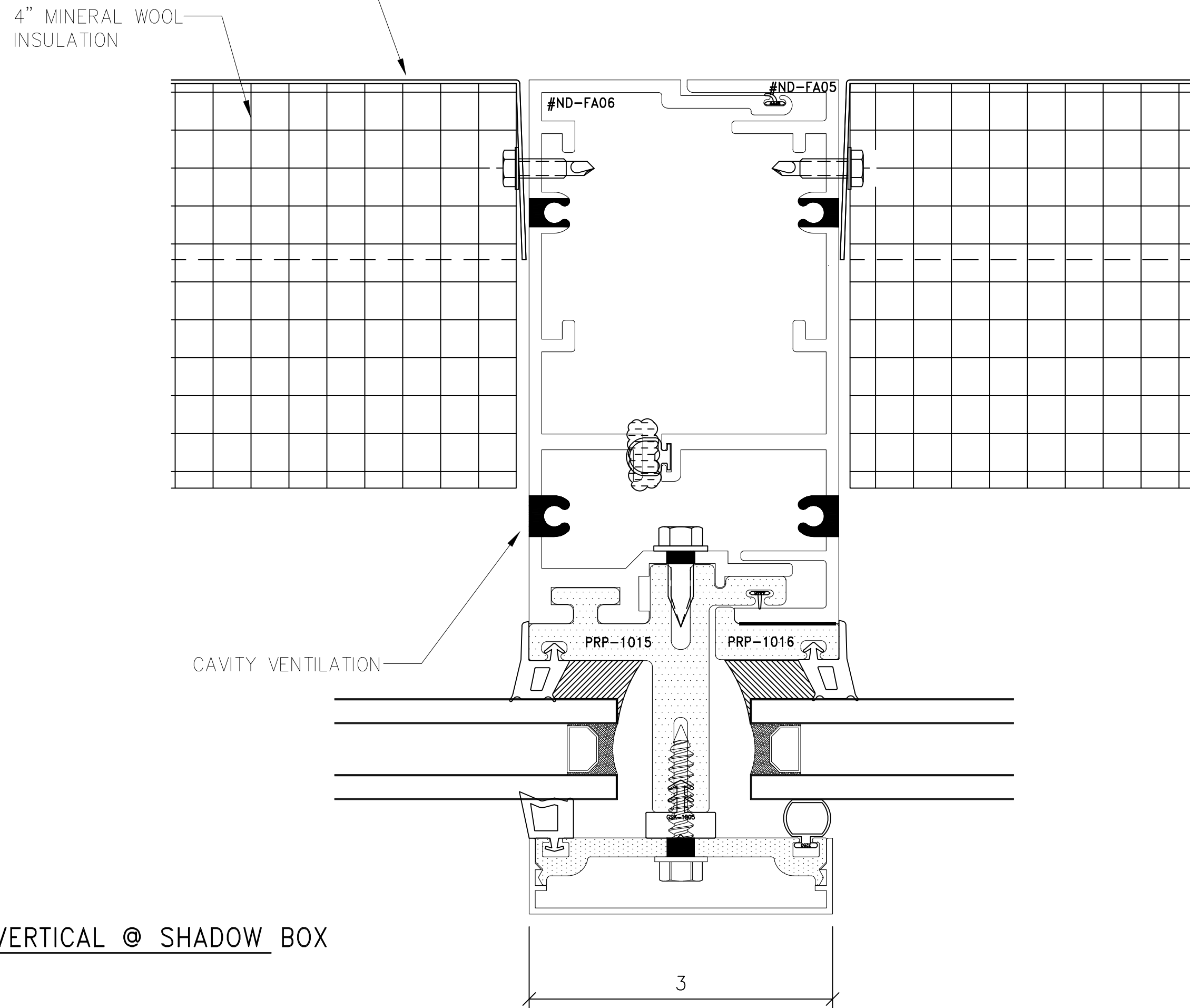
D D02 HORIZONTAL STACK



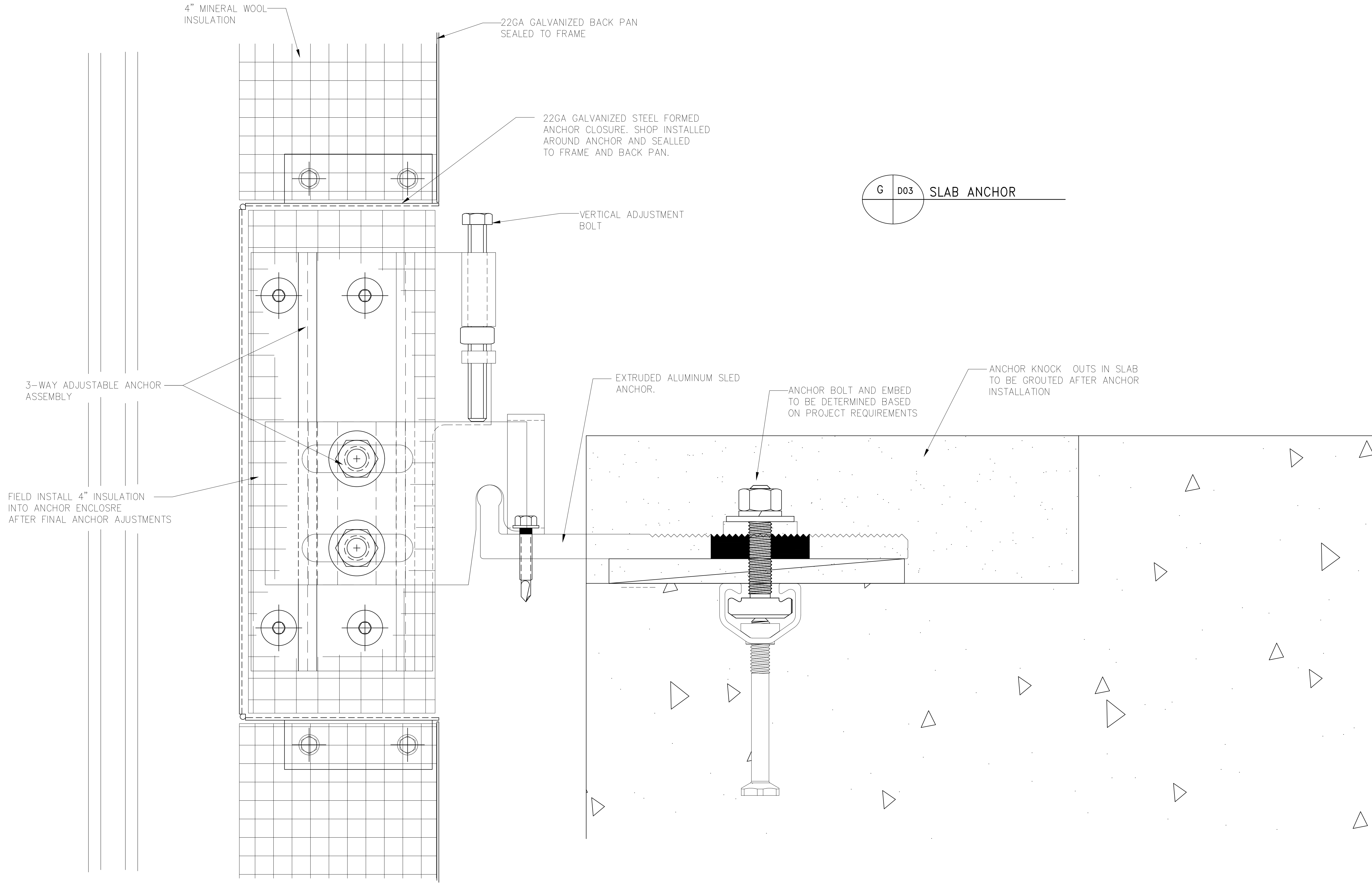
E D02 VERTICAL @ VISION



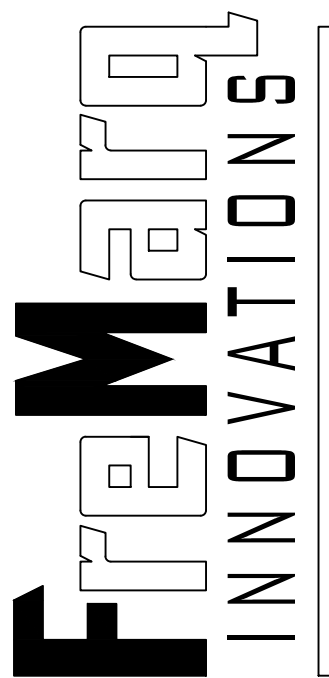
F D02 VERTICAL @ SHADOW BOX



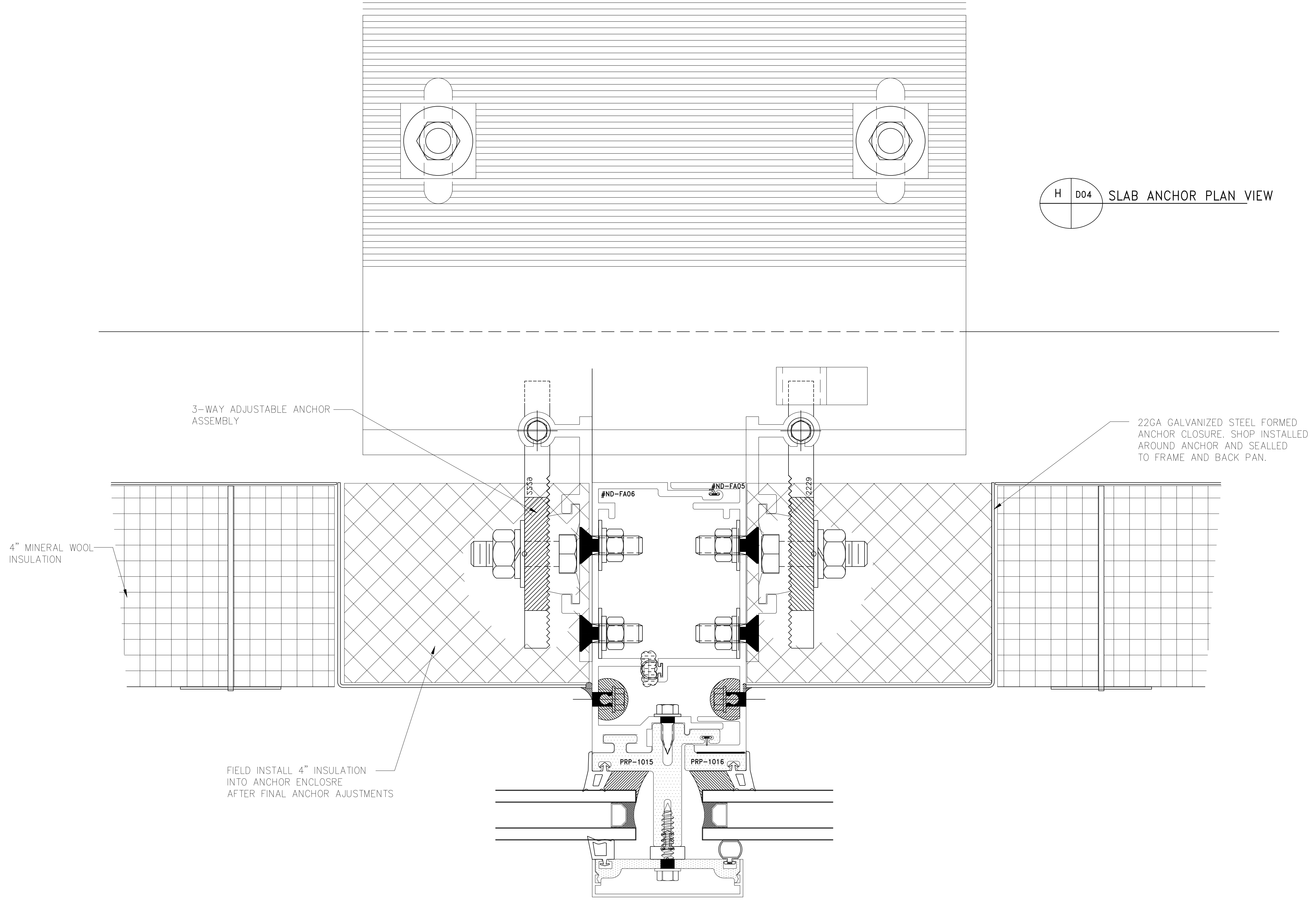
PROJECT:		UCW3500 CAPTURED CW W/1" IGU	
LOCATION:			
ARCHITECT:			
CONTRACTOR:			
DRAWN BY:		TAF	
DATE:		10/16/23	
NO.		BY	
REVISIONS			
GENERAL NOTES: 1) Contractor to verify all dimensions in the field. All framing will be manufactured to the dimensions indicated unless otherwise noted. 2) Architect to review all conditions for compliance to contract documents and, if required, provide correct details and/or dimensions to ensure proper coordination. 3) Drawings marked "approved" or "approved as noted" shall be interpreted as an accurate condition of job requirements and such approval shall authorize release to fabrication. 4) FreeMarq shall not be responsible for any errors and/or work that occurs from the use of these drawings by other trades.			
FreeMarq INNOVATIONS 1101 NORTH MILL STREET MERRILL, WISCONSIN 54452 WWW.FREEMARQINNOVATIONS.COM		JOB NUMBER SHEET TITLE DETAIL SHEET DRAWING SCALE 11x17 = 6" = 1'-0" 22x34 = 12" = 1'-0" DRAWING NO. D02	



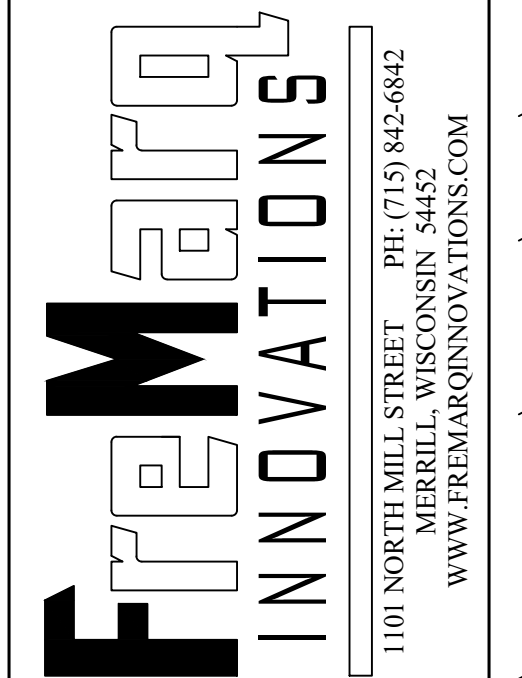
G D03 SLAB ANCHOR

PROJECT:		DRAWN BY: TAF		NO.		DATE		BY		REVISIONS	
UCW3500 CAPTURED CW W/1" IGU		DATE: 10/16/23									
LOCATION:		ARCHITECT:		CONTRACTOR:							
 1101 NORTH MILL STREET MERRILL, WISCONSIN 54452 WWW.FREMARAINNOVATIONS.COM											
JOB NUMBER		SHEET TITLE		DRAWING SCALE		DRAWING NO.					
		DETAIL SHEET		11x17 = 6" = 1'-0" 22x34 = 12" = 1'-0"		D03					

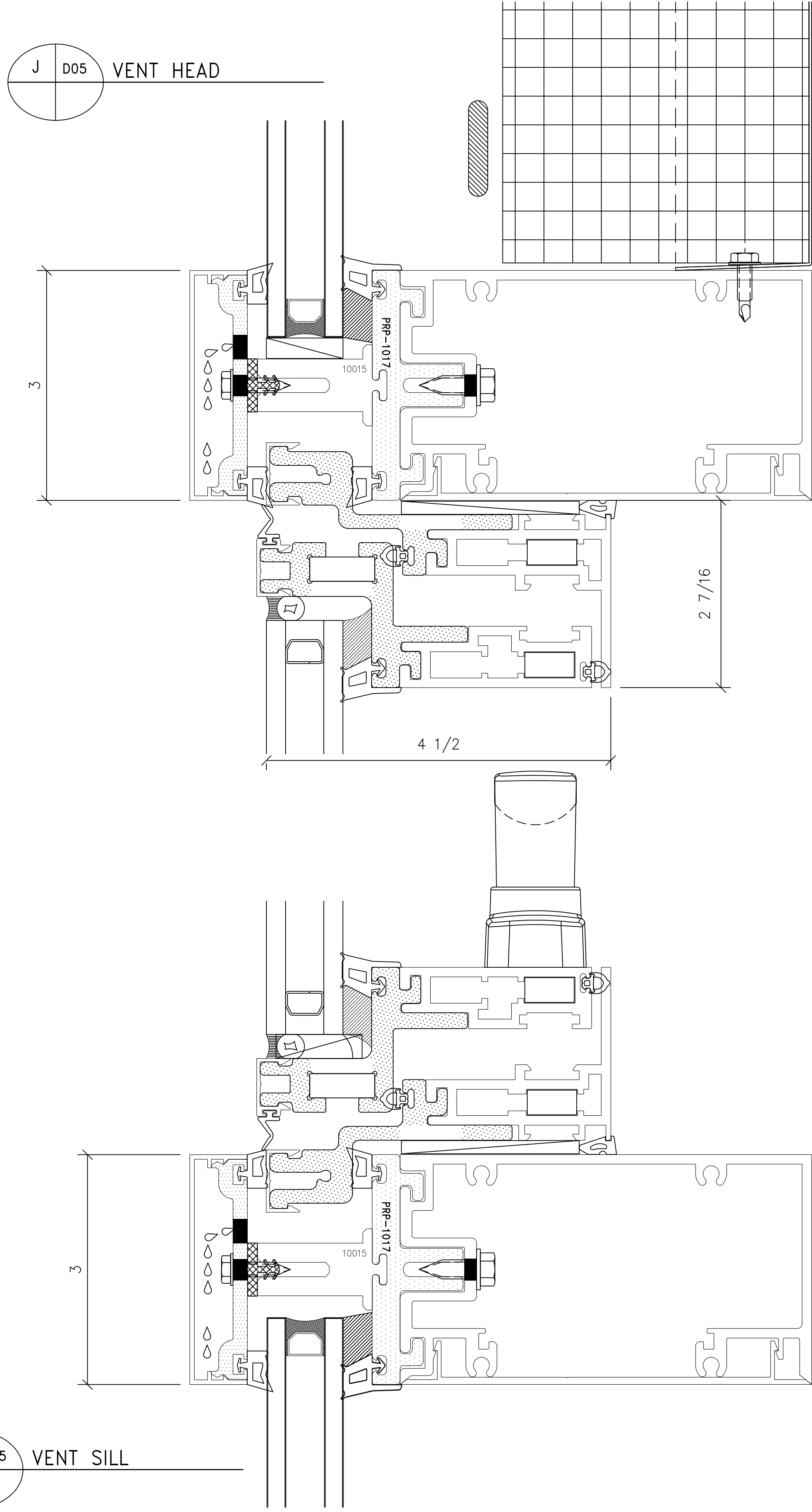
GENERAL NOTES:
 1) Contractor to verify all dimensions in the field. All framing will be manufactured to the dimensions indicated unless otherwise noted.
 2) Architect to verify all conditions for compliance to contract documents and, if required, provide correct details and/or dimensions to ensure proper coordination.
 3) Drawings marked "approved" or "approved as noted" shall be interpreted as an accurate condition of job requirements and such approval shall authorize release to fabrication.
 4) Fremara shall not be responsible for any errors and/or work that occurs from the use of these drawings by other trades.



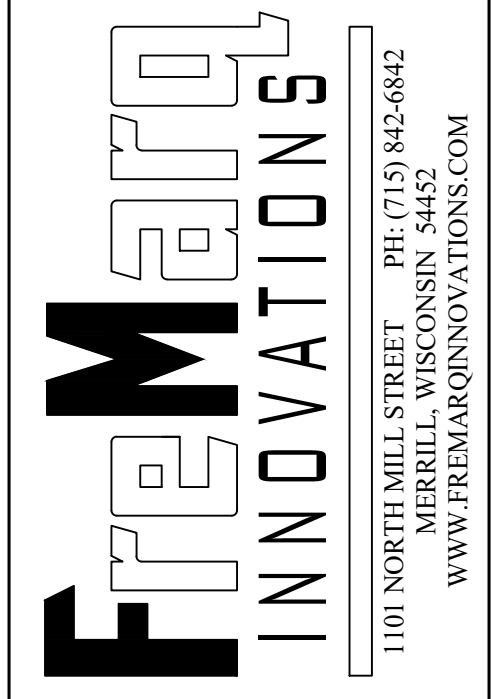
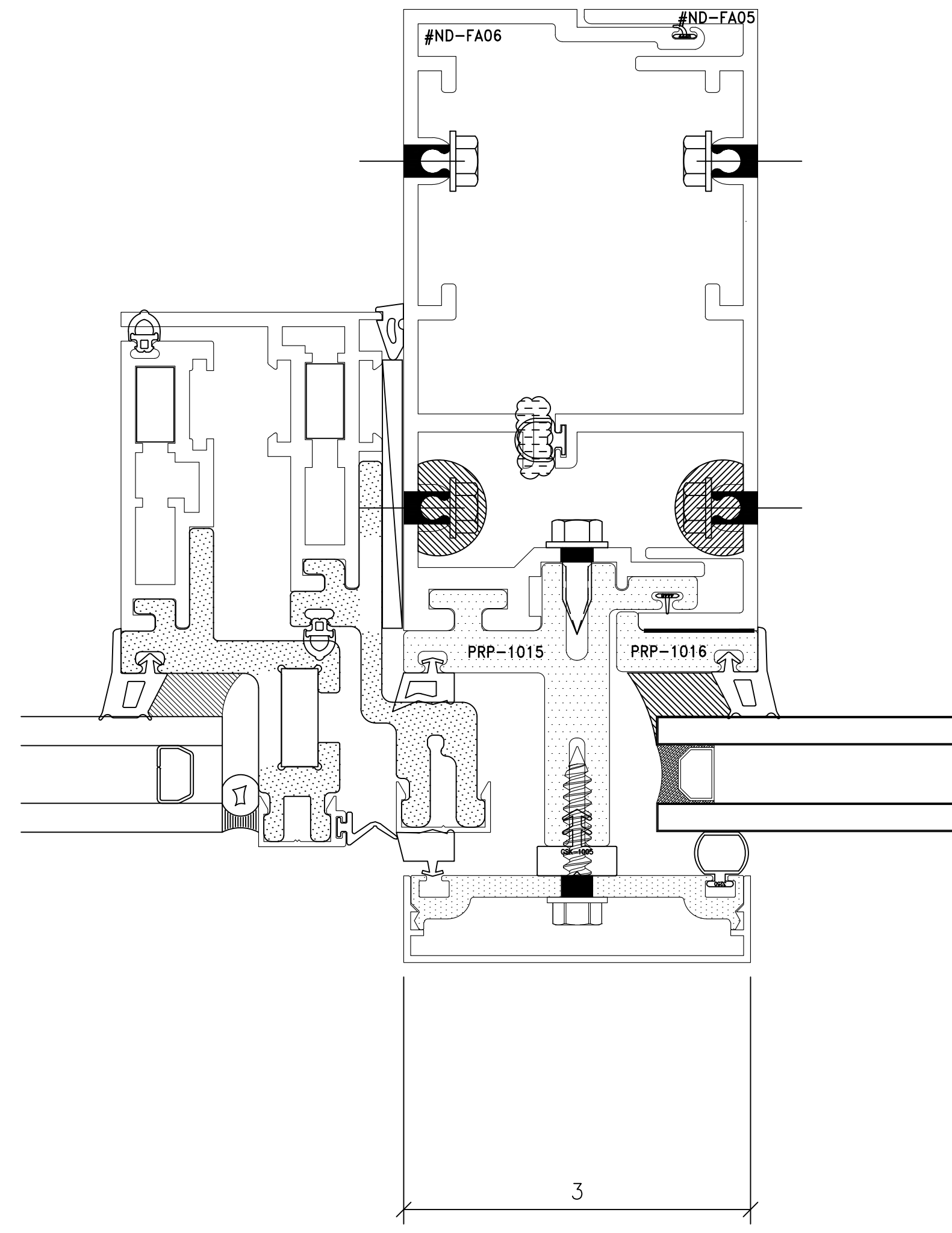
PROJECT: UCW3500 CAPTURED CW W/1" IGU	DRWN BY: TAF			
	DATE: 10/16/23	NO.	DATE	BY
LOCATION:	GENERAL NOTES:			
ARCHITECT:	1) Contractor to verify all dimensions in the field. All framing will be manufactured to the dimensions indicated unless otherwise noted.			
CONTRACTOR:	2) Architect to review all conditions for compliance to contract documents and, if required, provide correct details and/or dimensions to ensure proper coordination.			
	3) Drawings marked "approved" or "approved as noted" shall be interpreted as an accurate condition of job requirements and such approval shall authorize release to fabrication.			
	4) Fremara shall not be responsible for any errors and/or work that occurs from the use of these drawings by other trades.			
JOB NUMBER	DRAWING NO.			
SHEET TITLE	D04			
DRAWING SCALE	11x17 = 6" = 1'-0"			
	22x34 = 12" = 1'-0"			



K D05 VENT SILL



L D05 VENT JAMB



JOB NUMBER
 SHEET TITLE
DETAIL SHEET
 DRAWING SCALE
 11x17 = 6"= 1'-0"
 22x34 = 12"= 1'-0"
 DRAWING NO.
D05

PROJECT:
UCW3500 CAPTURED CW W/1" IGU
 LOCATION:
 ARCHITECT:
 CONTRACTOR:

DRAWN BY: TAF	NO.	DATE	BY
DATE: 10/16/23			
GENERAL NOTES: 1) Contractor to verify all dimensions in the field. All framing will be manufactured to the dimensions indicated unless otherwise noted. 2) Architect to review all conditions for compliance to contract documents and, if required, provide correct details and/or dimensions to ensure proper coordination. 3) Drawings marked 'approved' or 'approved as noted' shall be interpreted as an accurate condition of job requirements and such approval shall authorize release to fabrication. 4) Fremara shall not be responsible for any errors and/or work that occurs from the use of these drawings by other trades.			